



# EXHIBIT A-1: BASELINE PUBLIC ACCESS IMPROVEMENTS

## SITE MAP

 Public Access

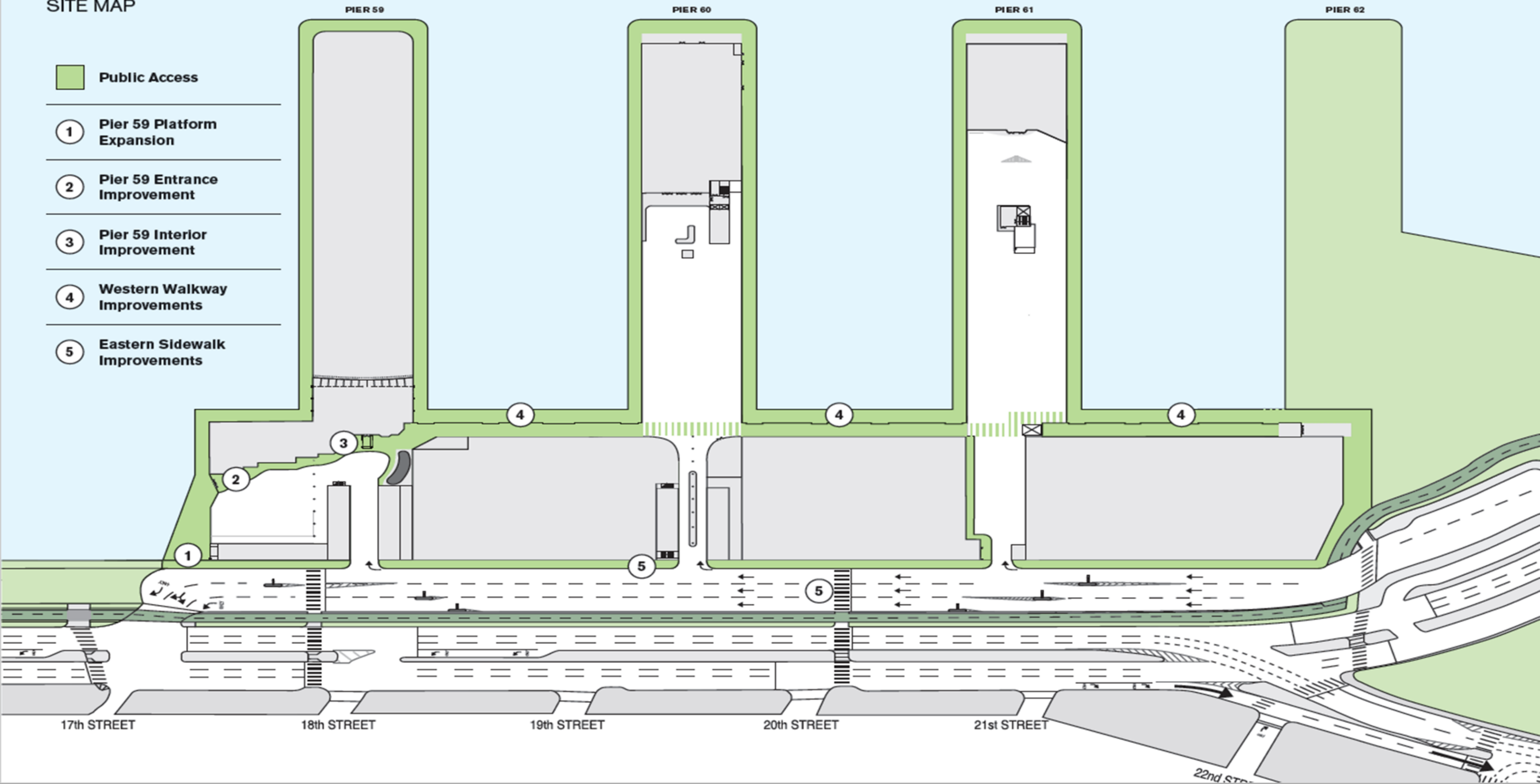
 Pier 59 Platform Expansion

 Pier 59 Entrance Improvement

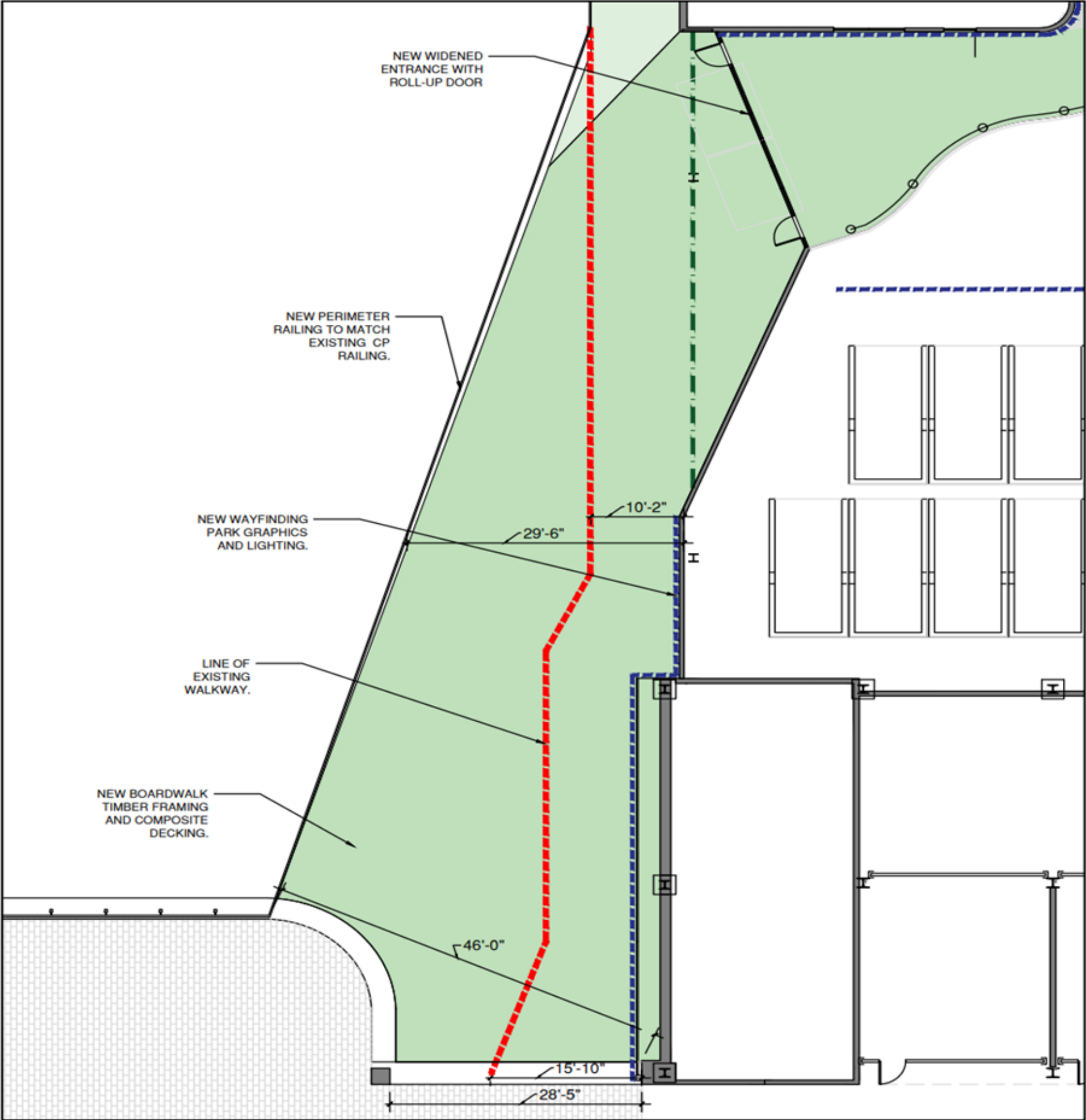
 Pier 59 Interior Improvement

 Western Walkway Improvements

 Eastern Sidewalk Improvements

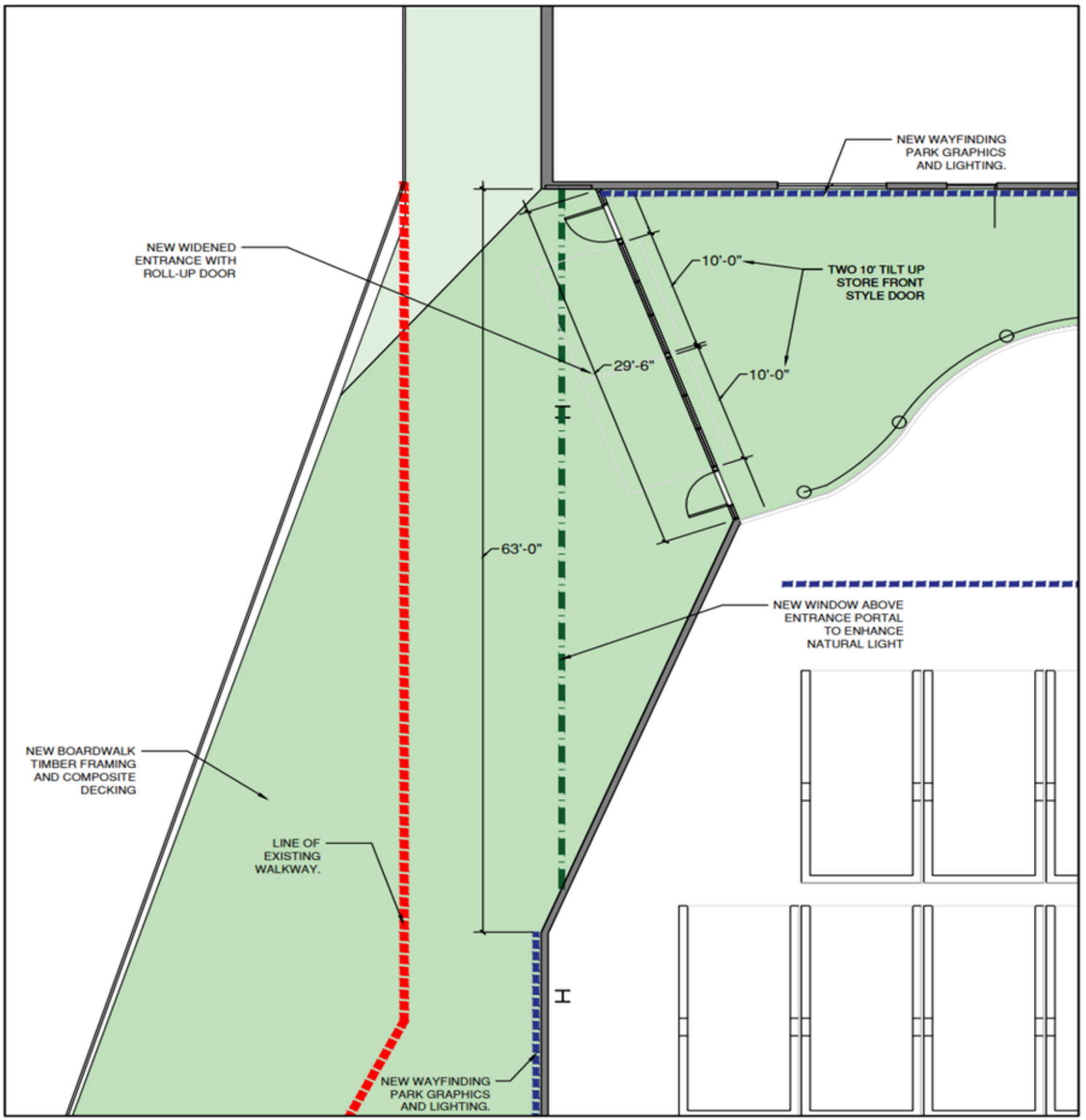


BASELINE PUBLIC ACCESS IMPROVEMENTS  
 1. PIER 59 WALKWAY IMPROVEMENTS



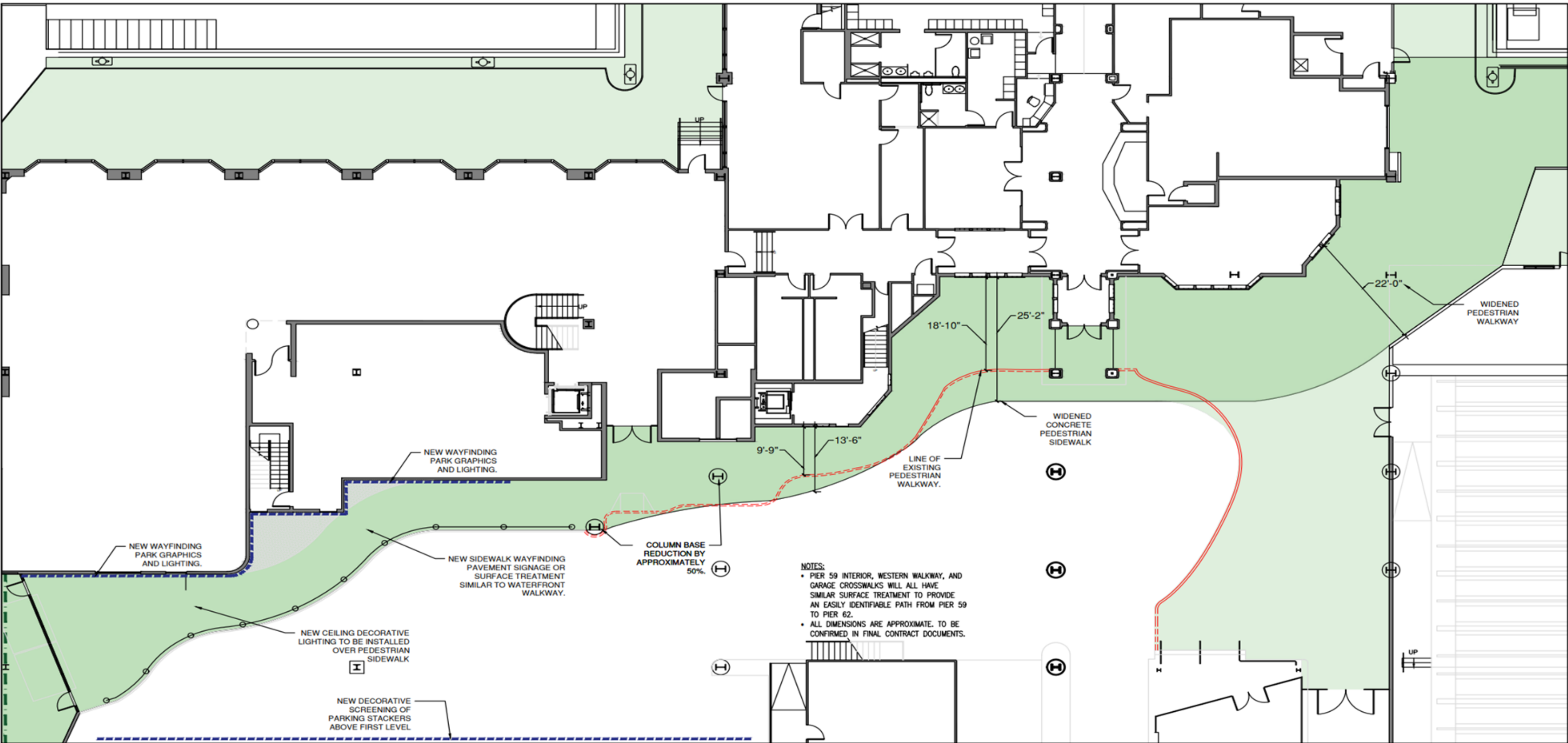
- NOTES:**
- PIER 59 INTERIOR, WESTERN WALKWAY, AND GARAGE CROSSWALKS WILL ALL HAVE SIMILAR SURFACE TREATMENT TO PROVIDE AN EASILY IDENTIFIABLE PATH FROM PIER 59 TO PIER 62.
  - ALL DIMENSIONS ARE APPROXIMATE. TO BE CONFIRMED IN FINAL CONTRACT DOCUMENTS.

BASELINE PUBLIC ACCESS IMPROVEMENTS  
 2. PIER 59 ENTRANCE IMPROVEMENT



- NOTES:**
- PIER 59 INTERIOR, WESTERN WALKWAY, AND GARAGE CROSSWALKS WILL ALL HAVE SIMILAR SURFACE TREATMENT TO PROVIDE AN EASILY IDENTIFIABLE PATH FROM PIER 59 TO PIER 62.
  - ALL DIMENSIONS ARE APPROXIMATE. TO BE CONFIRMED IN FINAL CONTRACT DOCUMENTS.

BASELINE PUBLIC ACCESS IMPROVEMENTS  
 3. PIER 59 INTERIOR IMPROVEMENTS



NEW WAYFINDING PARK GRAPHICS AND LIGHTING.

NEW SIDEWALK WAYFINDING PAVEMENT SIGNAGE OR SURFACE TREATMENT SIMILAR TO WATERFRONT WALKWAY.

COLUMN BASE REDUCTION BY APPROXIMATELY 50%.

LINE OF EXISTING PEDESTRIAN WALKWAY.

WIDENED CONCRETE PEDESTRIAN SIDEWALK

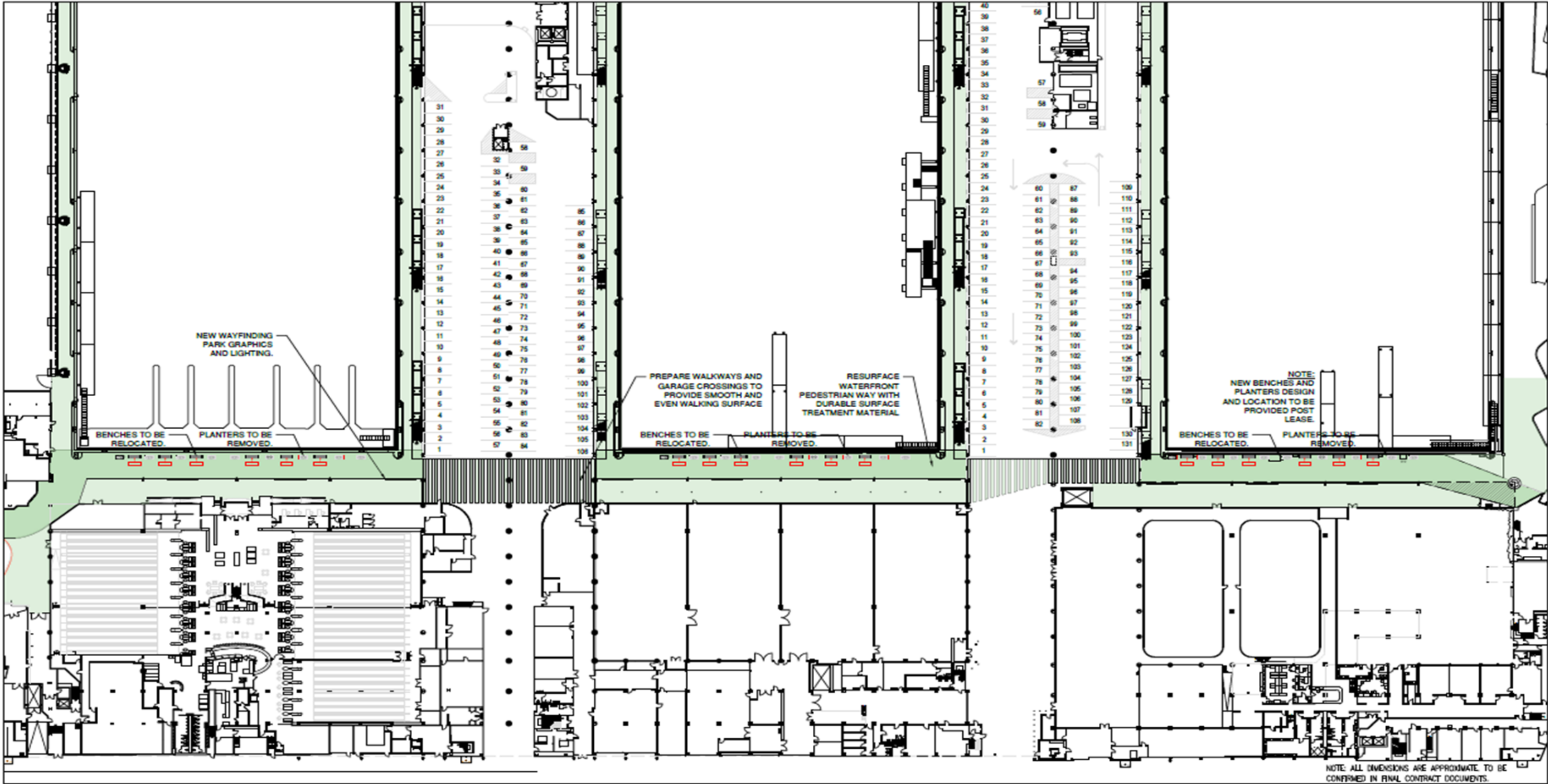
WIDENED PEDESTRIAN WALKWAY

- NOTES:
- PIER 59 INTERIOR, WESTERN WALKWAY, AND GARAGE CROSSWALKS WILL ALL HAVE SIMILAR SURFACE TREATMENT TO PROVIDE AN EASILY IDENTIFIABLE PATH FROM PIER 59 TO PIER 62.
  - ALL DIMENSIONS ARE APPROXIMATE. TO BE CONFIRMED IN FINAL CONTRACT DOCUMENTS.

NEW CEILING DECORATIVE LIGHTING TO BE INSTALLED OVER PEDESTRIAN SIDEWALK

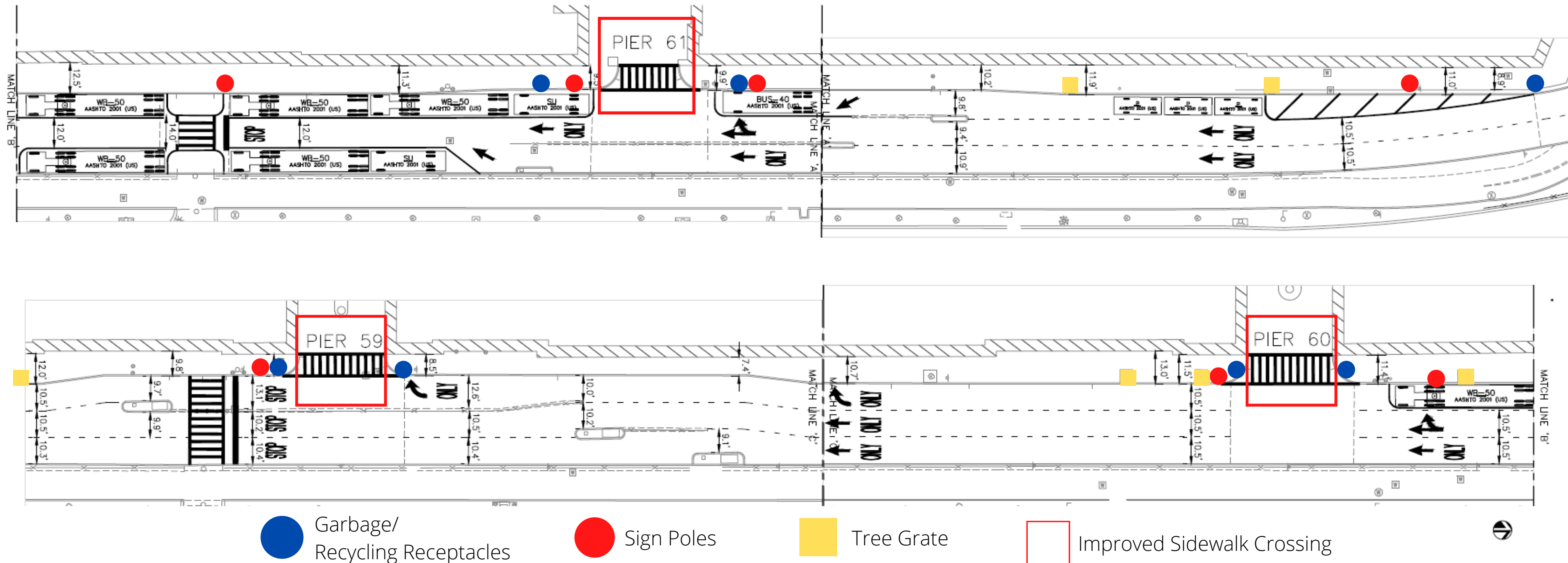
NEW DECORATIVE SCREENING OF PARKING STACKERS ABOVE FIRST LEVEL

BASELINE PUBLIC ACCESS IMPROVEMENTS  
4. WESTERN WALKWAY AND GARAGE IMPROVEMENTS



# Eastern Sidewalk Improvements

- Remove pedestrian obstructions and modifications to the existing Service Road Sidewalks to improve pedestrian flow
  - Remove all garbage and recycling receptacles off sidewalk
  - Remove signage poles
  - Remove tree grates



# Eastern Sidewalk Improvements

