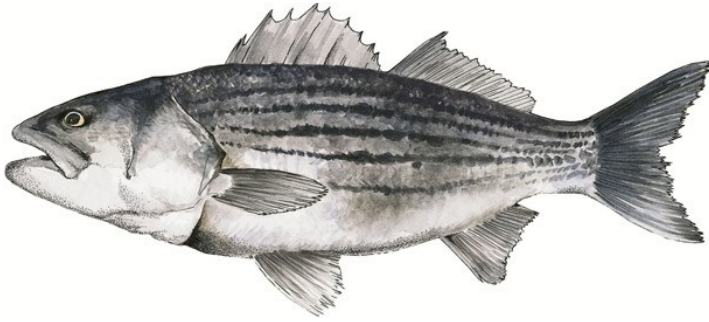


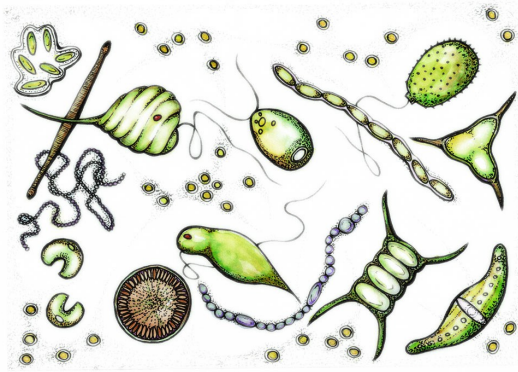
Striped Bass



Subtidal Feeder

Striped Bass feed on a variety of fish such as Atlantic Silversides and Tomcods plus crabs, sea worms, etc. by chasing their prey several feet underwater.

Plankton



Intertidal Feeder

Phytoplankton receive energy from the sun while Zooplankton feed on phytoplankton and other zooplankton.

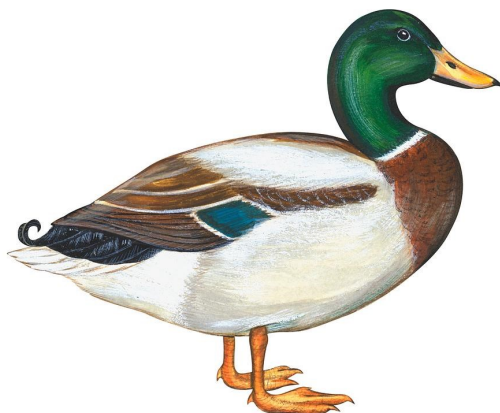
Double Crested Cormorant



Surface Feeder

Double Crested Cormorants feed on fish in shallow water by diving and chasing them with their powerful webbed feet. They also feed on crustaceans and insects.

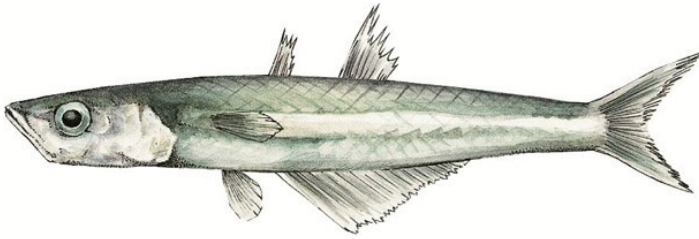
Mallard Duck



Surface Feeder

Mallard Ducks feed on aquatic vegetation, aquatic insect larvae (zooplankton), snails and seeds by tipping forward into the water's surface.

Atlantic Silverside



Intertidal Feeder

Atlantic Silversides are small fish that feed on plankton, worms, shrimp and algae by swimming in schools a few feet under the surface of the water.

Eastern Oyster



Subtidal Feeder

Oysters are bivalves that filter feed plankton by opening their shells and pumping water through their gills to trap food.

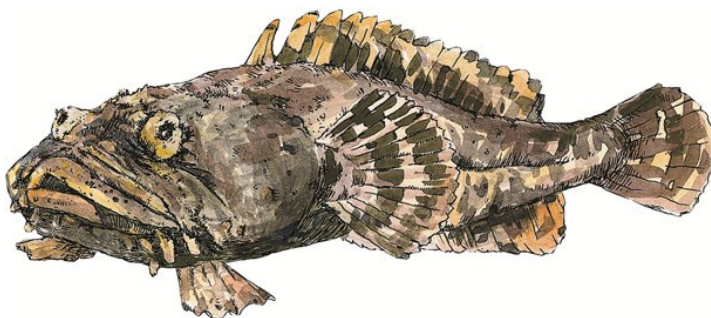
Blue Crab



Benthic Feeder

Blue Crabs are crustaceans that feed on bivalves, fish, plants, other crustaceans and nearly anything else they can find by foraging on the river floor with their pinchers.

Oyster Toadfish



Benthic Feeder

Oyster Toadfish feed on oysters, worms, crustaceans, snails and small fish by using their strong jaws and teeth to crush bones and open shells.

