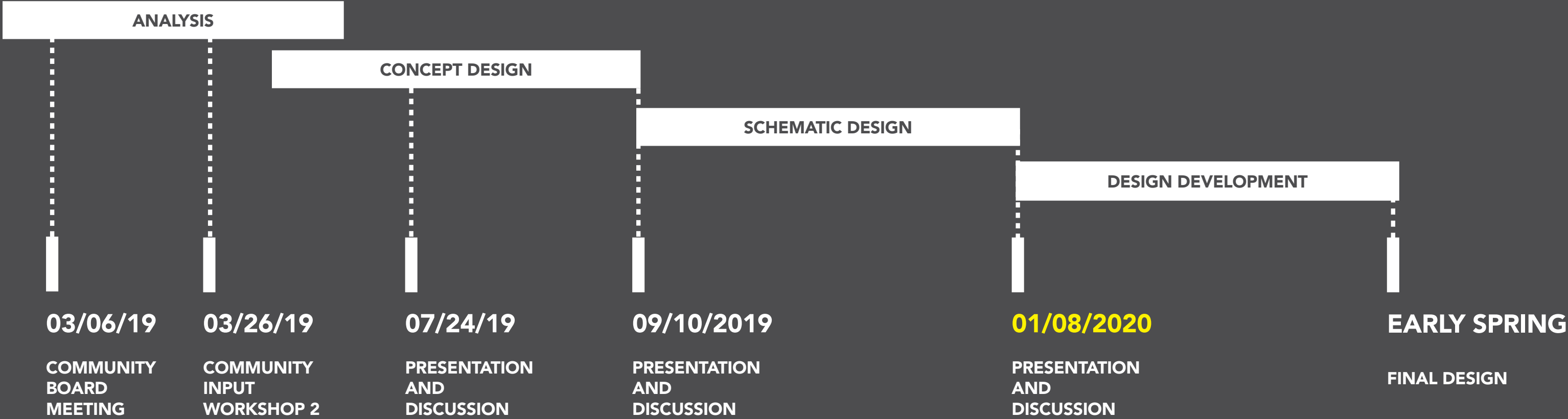


# HUDSON RIVER PARK GANSEVOORT PENINSULA

DESIGN UPDATE | JANUARY 08, 2020

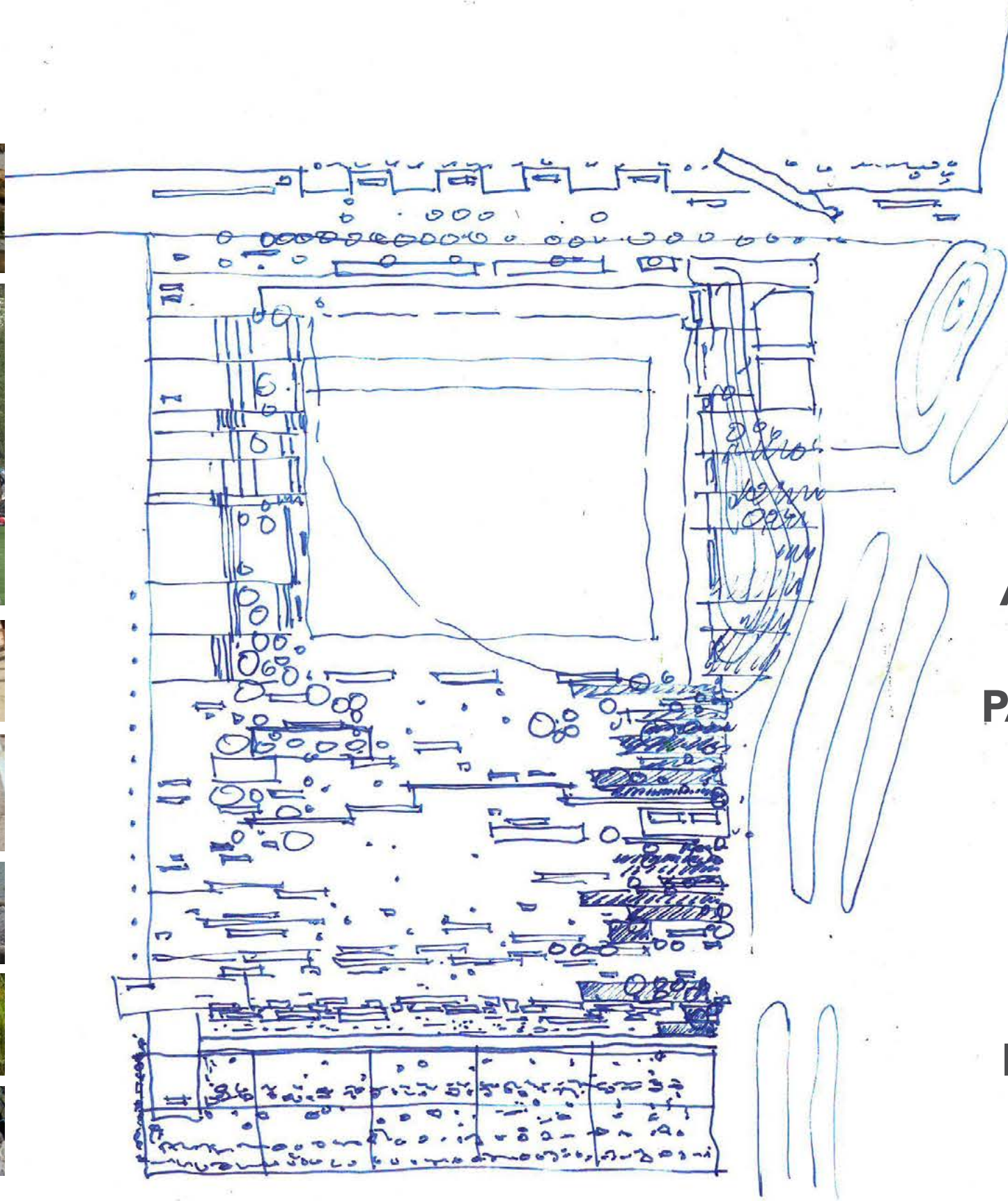
# WHERE WE ARE



CONSTRUCTION START - **FALL 2020**

COMPLETION - **2022**

# CONCEPT SKETCH



**VARIED EDGES**

**ACTIVE RECREATION**

**PASSIVE RECREATION**

**UPLAND BEACH**

**ENGAGE THE RIVER**

**INTERTIDAL HABITAT**

**IN-WATER HABITAT**

# CONCEPT PLAN\_CB2 MEETING\_09/10/19

## CB 2 COMMENTS:

- INCORPORATE FITNESS EQUIPMENT
- MAKE SOUTHERN EDGE MORE OPEN AND ENGAGING
- RESILIENCY APPROACH

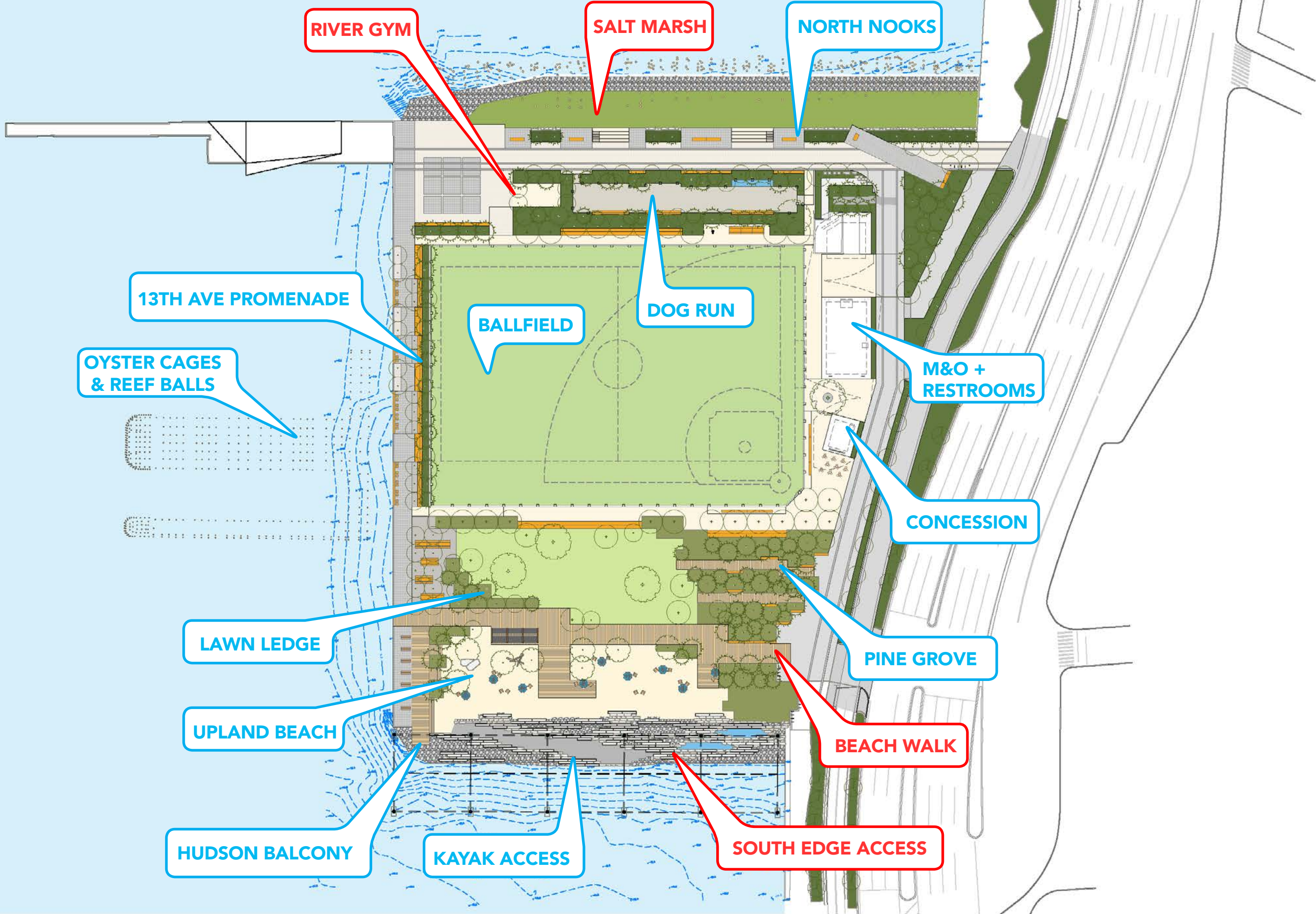
## KAYAKING COMMUNITY COMMENTS:

- ADD LEDGES FOR LANDING AND LAUNCHING KAYAKS
- EXPLORE SOFTER RAMP MATERIALS



# SITE PLAN & PROGRAMS

40' 0' 80'  
SCALE 1"=80'



# SITE AERIAL



# NORTHERN NOOKS, SALT MARSH, & DOG RUN



# RIVER GYM



RIVER GYM

# RIVER GYM



# RIVER GYM



# 13TH AVE PROMENADE



# 13TH AVE LOUNGES



# 13TH AVE PICNIC GROVE



# HUDSON BALCONY



# SOUTHERN EDGE UPDATES

# SOUTHERN EDGE - 09/10/19



# SOUTHERN EDGE - UPDATE



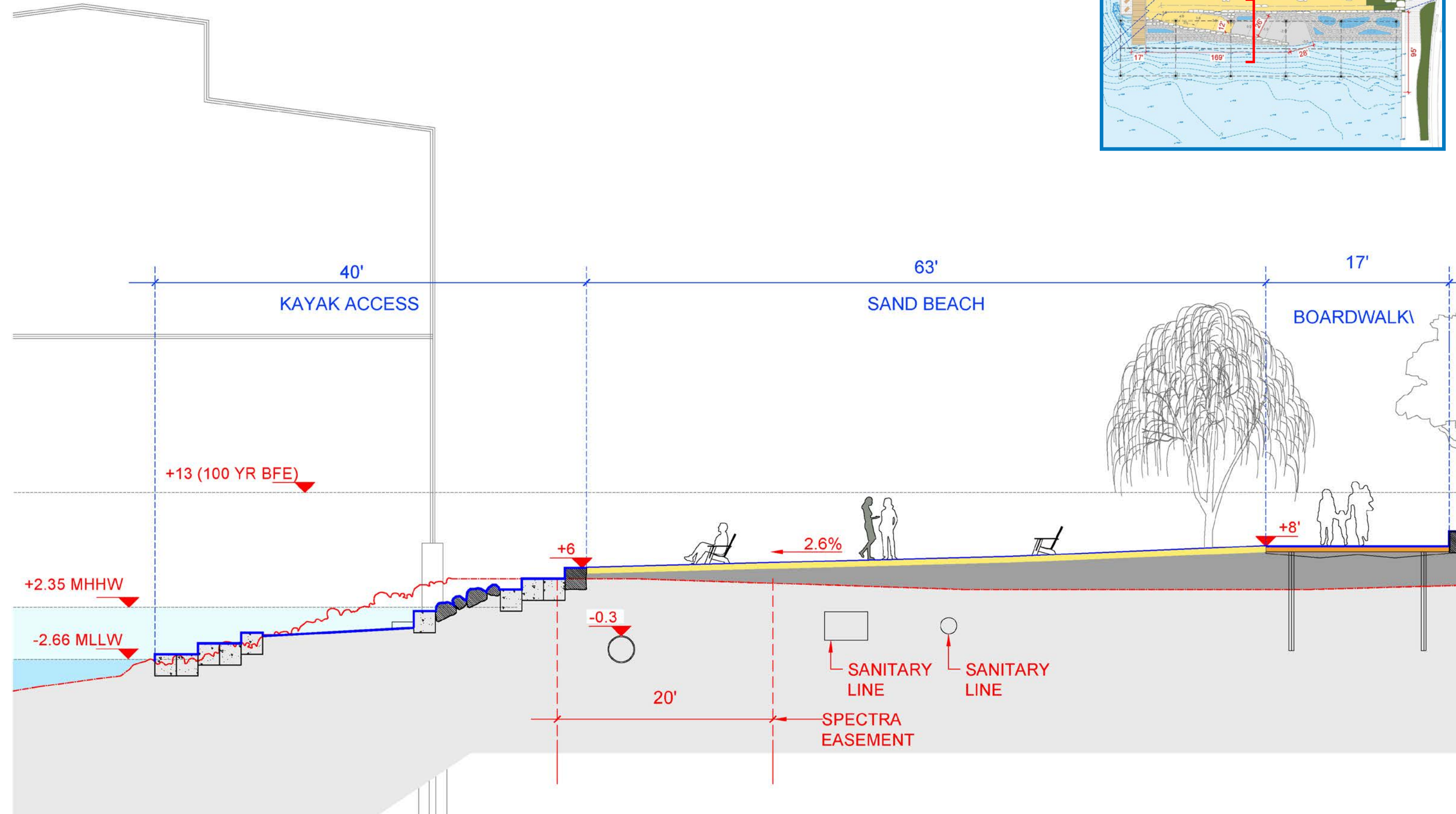
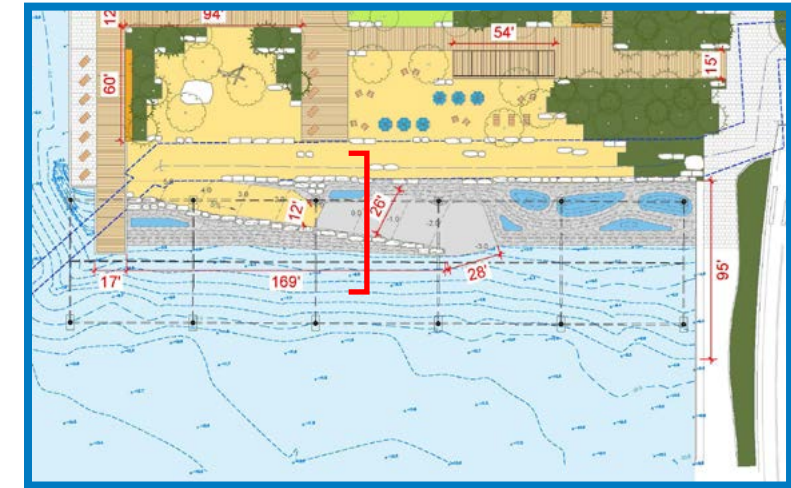
**SOUTHERN EDGE FROM PROMENADE - 09/10/19**



# SOUTHERN EDGE FROM PROMENADE - UPDATE



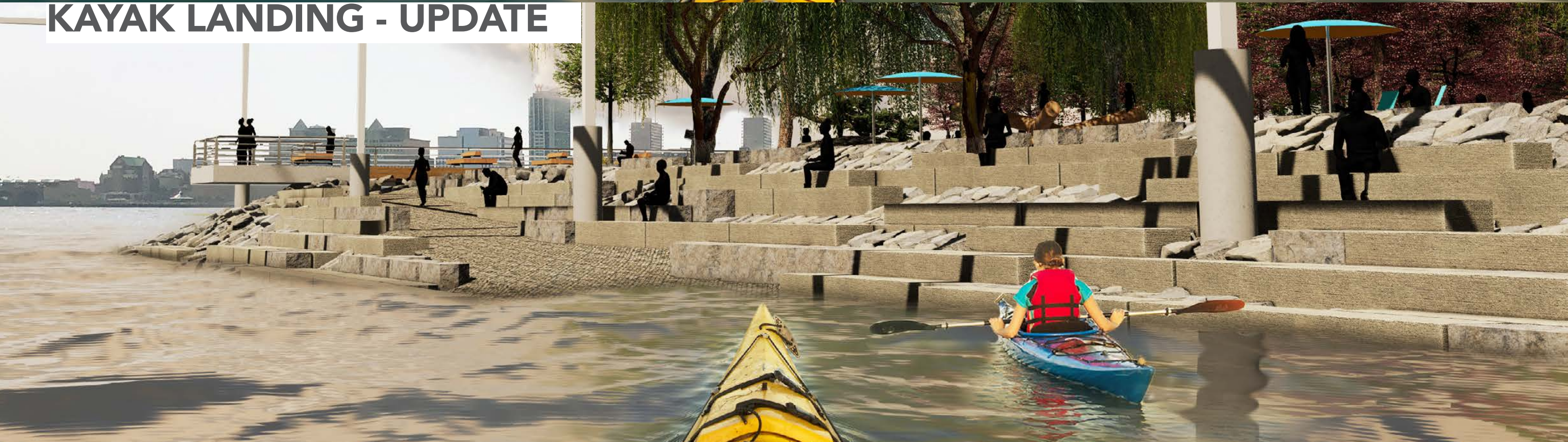
# KAYAK ACCESS SECTION



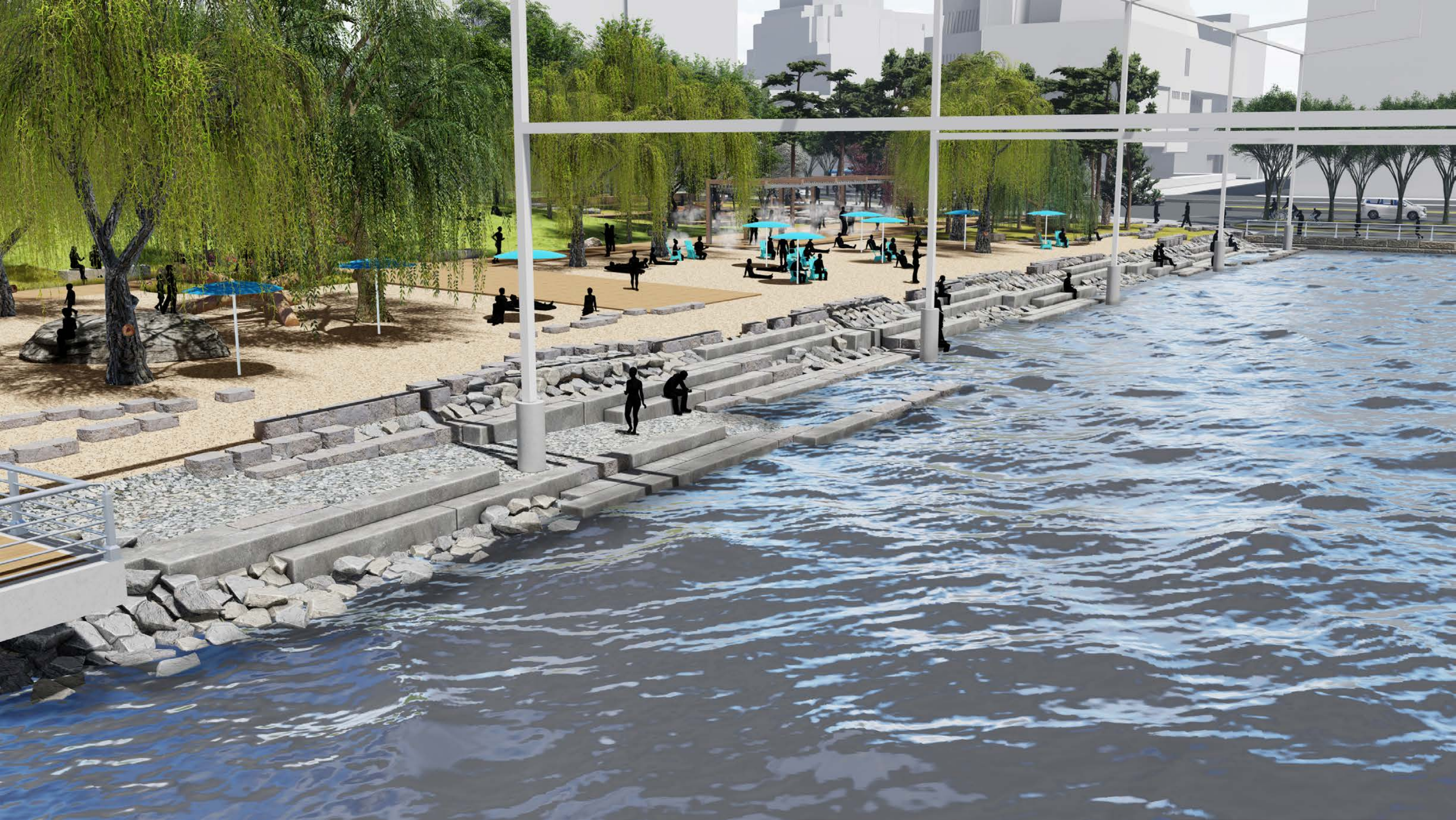
# KAYAK LANDING - 09/10/19



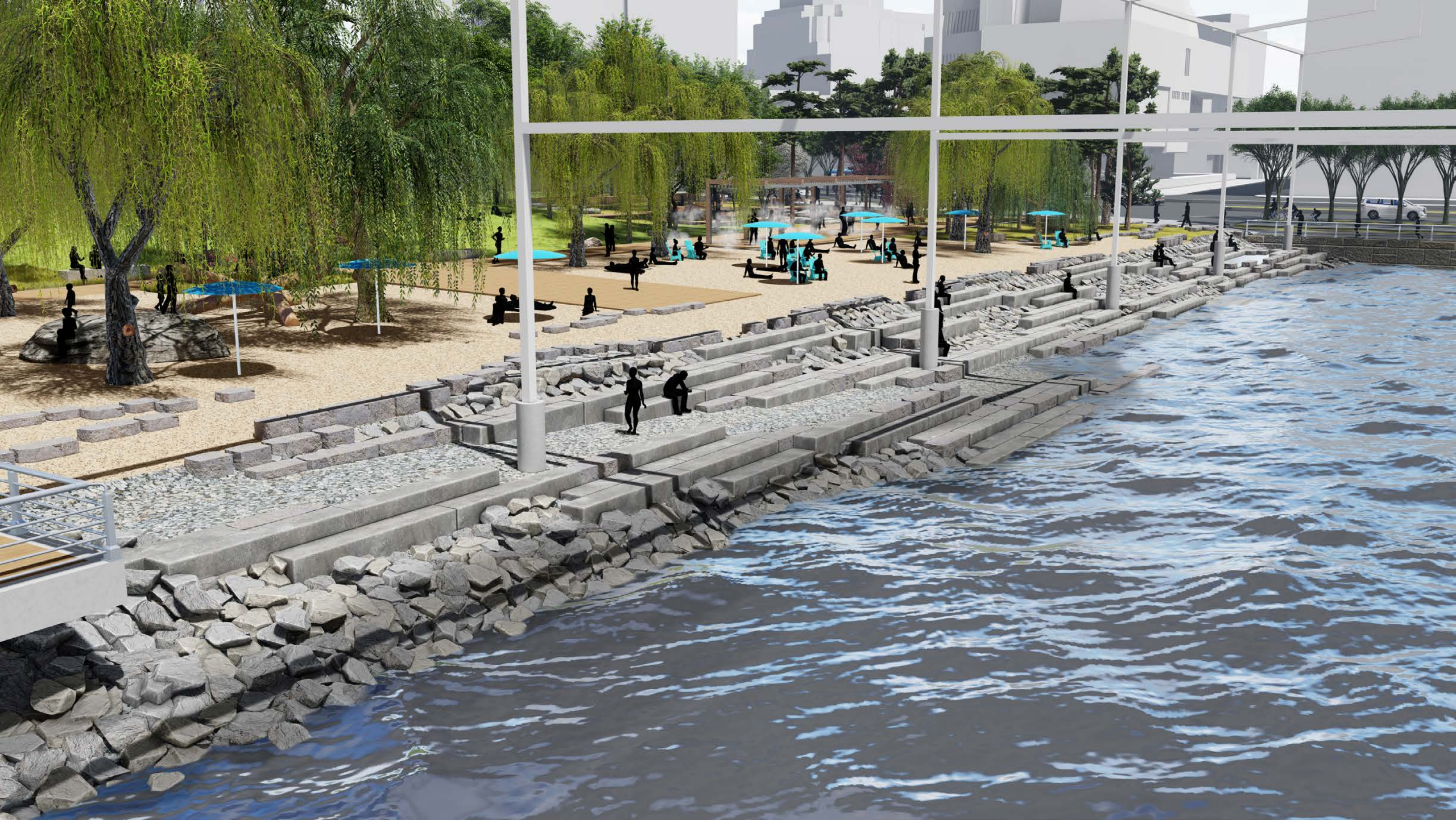
# KAYAK LANDING - UPDATE



# SOUTH EDGE @ HIGH TIDE



# SOUTH EDGE @ MID TIDE



# SOUTH EDGE @ LOW TIDE



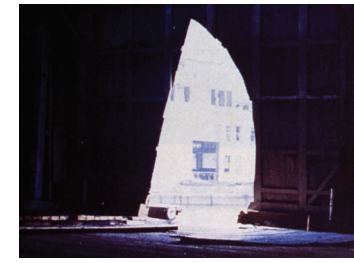
# RESILIENCY UPDATES





# ARCHITECTURE UPDATES

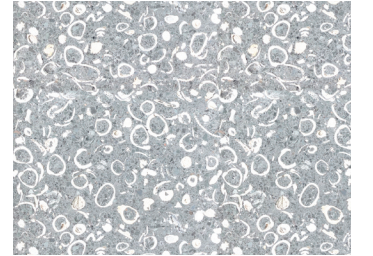
# PORCH CONCEPT



Canopy cuts referencing Gordon Matta Clark for daylight



Cast-in-place concrete



Oyster aggregate concrete

or



Sedum roof



Hanging plants

+

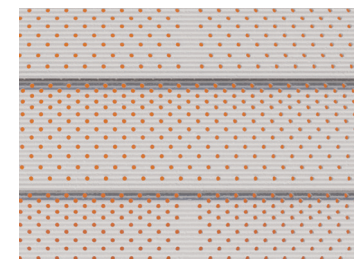


Concrete structural wall



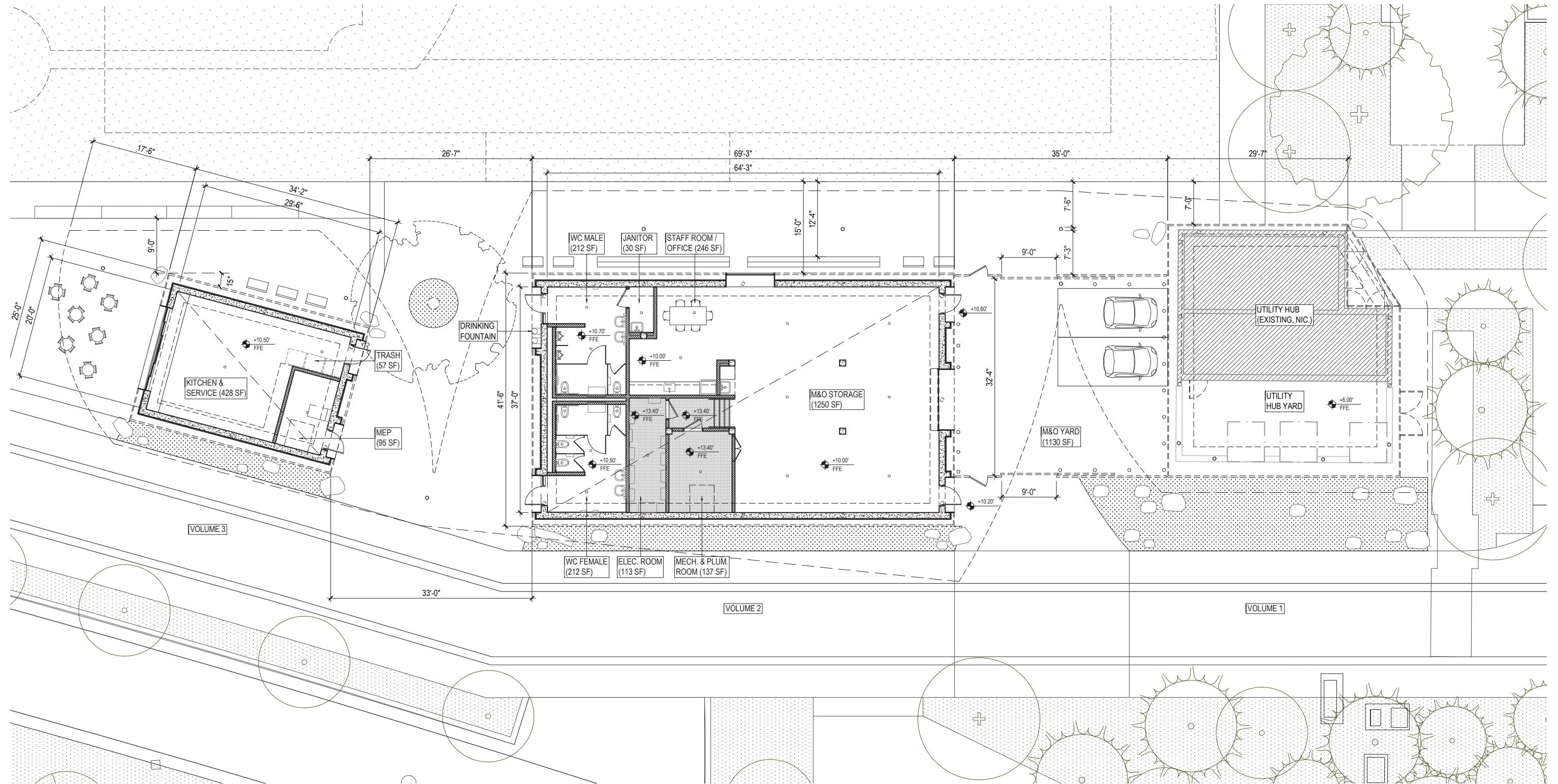
Accent color cladding

+

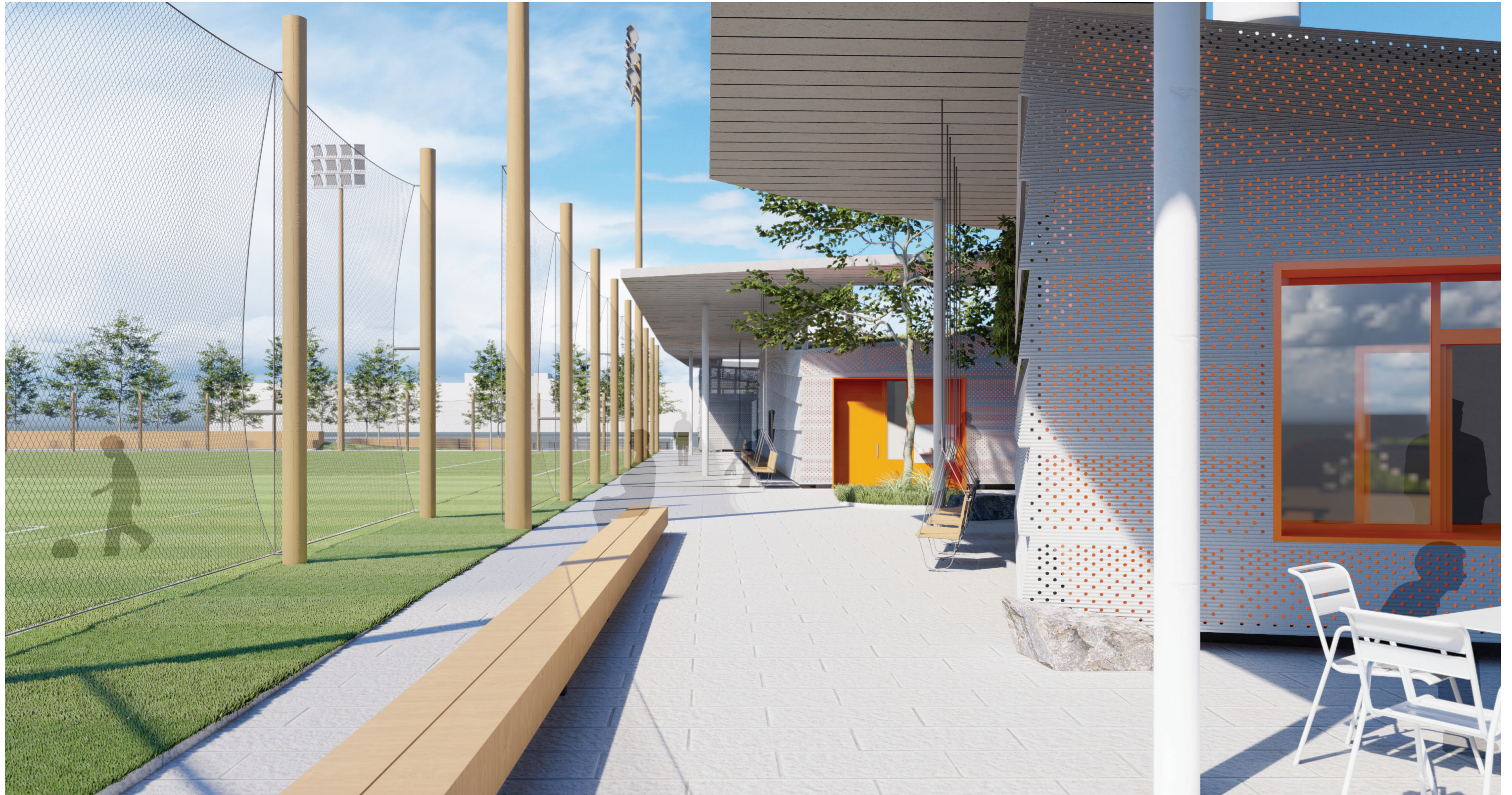


Perforated shingle rainscreen

# FLOOR PLAN



# PARK COMFORT STATION



View of western porch to ballfield

# PARK COMFORT STATION



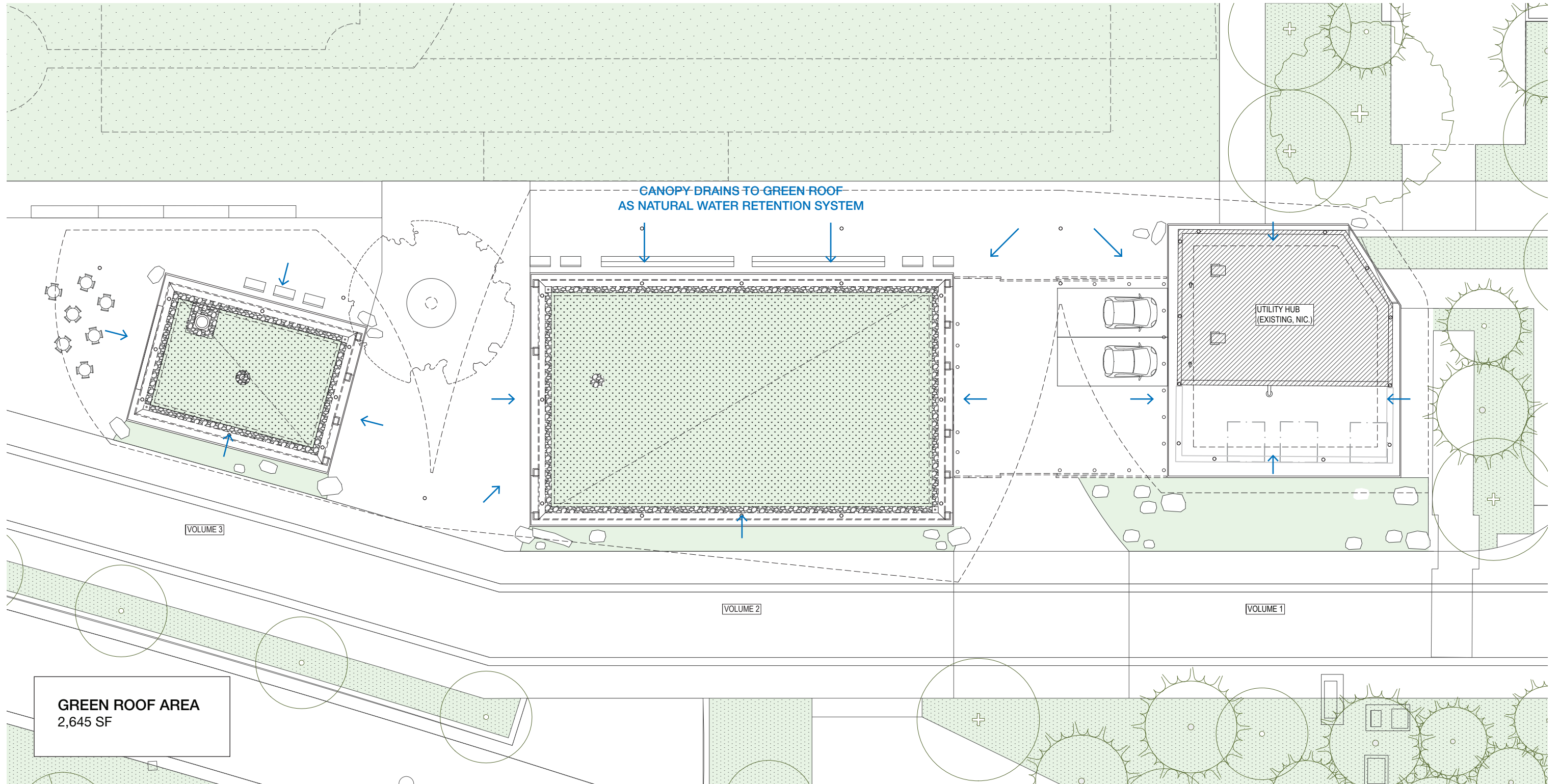
View of public WC entry wall

# PARK COMFORT STATION

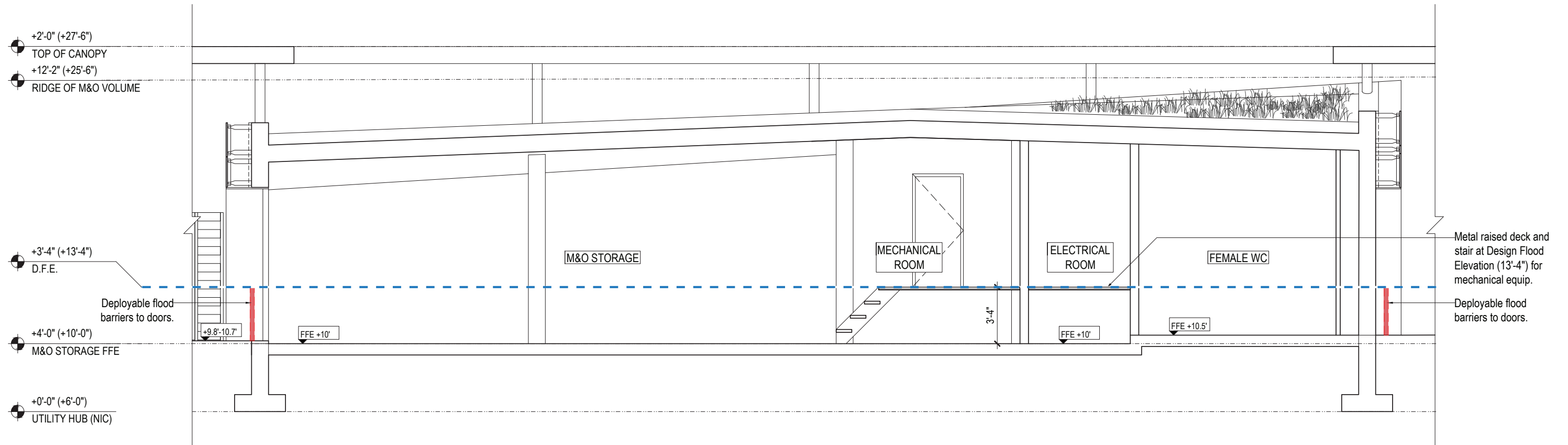


View of public gateway to ballfield

# GREEN ROOF & SUSTAINABILITY



# FLOOD PROOFING



M&O flood proofing section