

HUDSON RIVER PARK GANSEVOORT PENINSULA

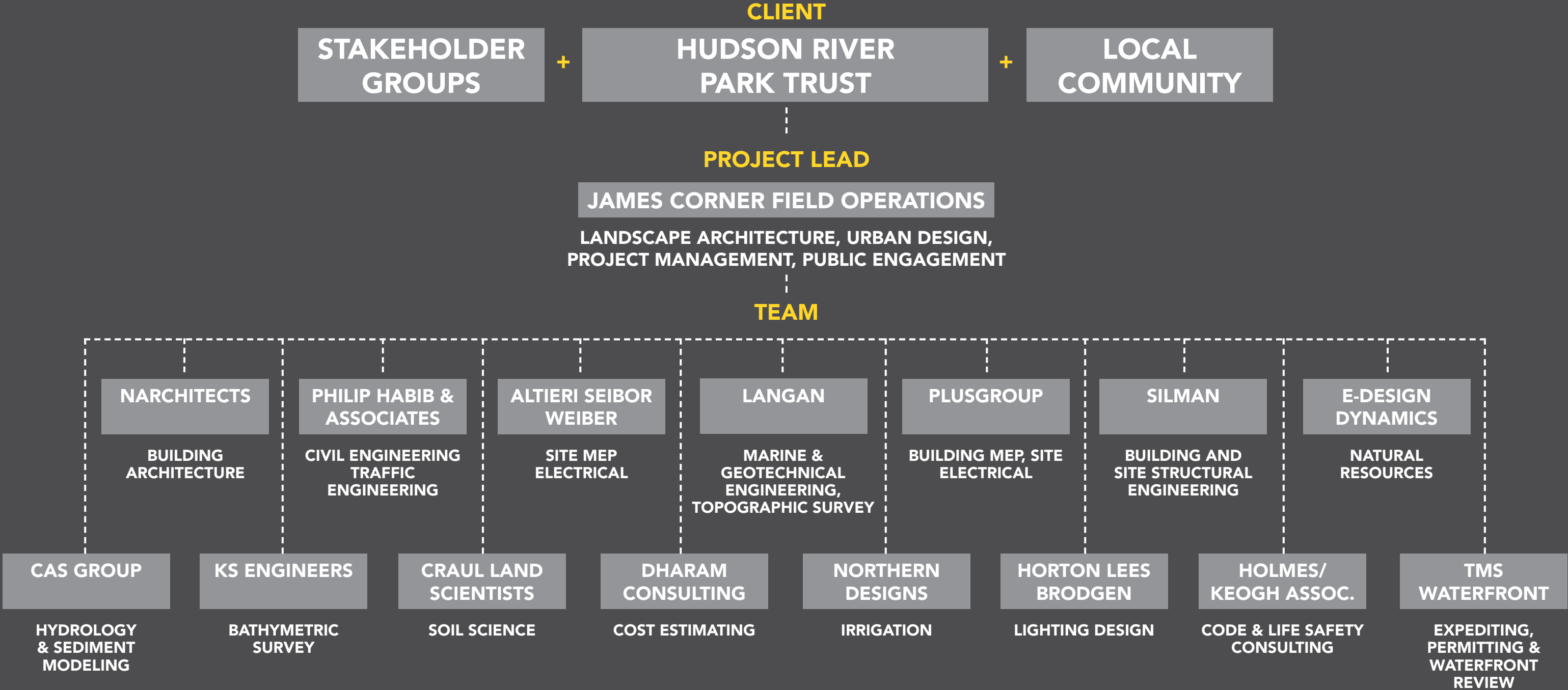
CONCEPT UPDATE | JULY 24, 2019

JAMES
CORNER
FIELD
OPERATIONS

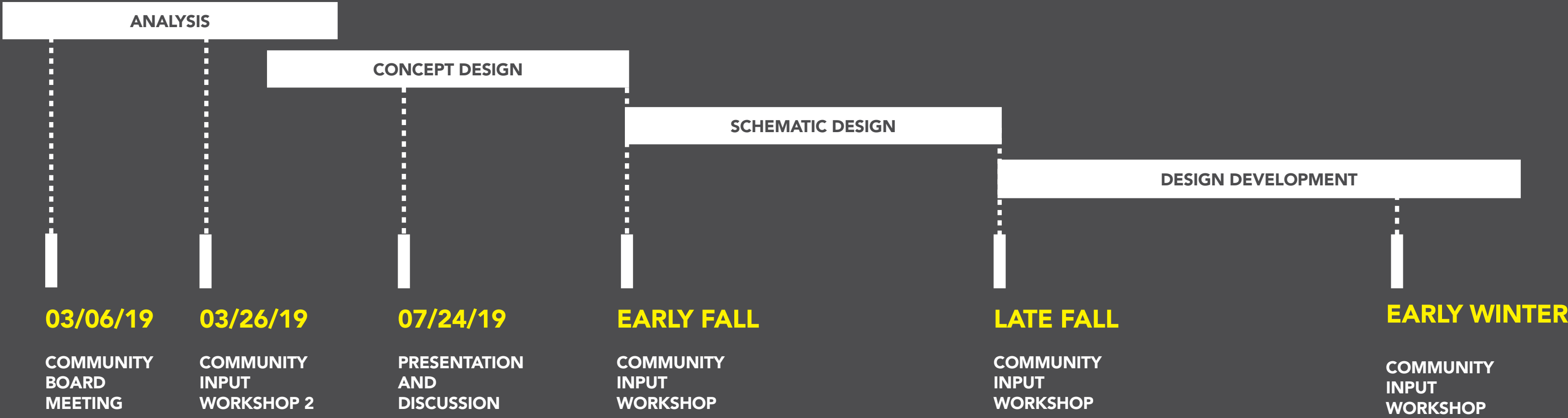
GANSEVOORT PENINSULA | HUDSON RIVER PARK, NY

07.24.2019 | FIELD OPERATIONS

WHO WE ARE



WHERE WE ARE



WHAT WE'VE HEARD SO FAR

PART OF A VIBRANT NEIGHBORHOOD



PIER 40
-Rowing
-Wetlab
-Turf Sports Fields
-Trapeze School
-Boat Mooring

PIER 46
-Turf Play Area
-Picnic Area

PIER 45
-Lawns

PIER 51
-Playground
-Water Play

PIER 55
-Gardens
-Ampitheater

PIER 57
-Public Rooftop

CHELSEA PIERS (FEE)
-Concession -Field House
-Comfort Station -Climbing Wall
-Batting Cages -Ice Skating
-Driving Range -Gym

PIER 62-64
-Skatepark
-Lawns
-Carousel

TENNIS

LEROY ST.
DOG RUN

CONCESSION
& RESTROOMS

LAWNS

RESTROOMS

THE WHITNEY

5 MINUTE WALK

14th ST PARK
-Lawn

**CHELSEA
WATERSIDE PARK**
-Sports Field
-Basketball
-Playground
-Water Play
-Dog Park

**JAMES J
WALKER PARK**
-Base Ball
-Soccer
-Handball

**SERAVALLI
PLAYGROUND**
-Basketball
-Playground

10 MINUTE WALK

CHELSEA PARK
-Soccer Field
-Basket Ball
-Playground
-Tennis Courts

WASHINGTON
SQUARE PARK

15 MINUTE WALK

EXISTING CONDITIONS & GIVENS

EXISTING CONDITIONS:

- **FDNY ACCESS: MAINTAIN VEHICULAR ENTRY AND TURNAROUND AREA**
- **TEXAS EASTERN GAS LINE: MAINTAIN 4' OF SOIL COVERAGE AND LIMIT EXCAVATION**
- **CSO (COMBINED SEWER OUTFLOW): MAINTAIN EXISTING OUTFLOW LOCATION**
- **PARK OPERATIONS BUILDING**

GIVENS:

- **NOT A COMMERCIAL PIER**
- **NO DEVELOPMENT**
- **DAY'S END INSTALLATION**
- **COMFORT STATION**
- **MAINTENANCE & OPERATION FACILITY**
- **BEACH**



03/06 CB2 MEETING



FEEDBACK FROM MARCH 6TH CB MEETING

FAVORITE WAYS TO ENJOY PARKS:

- PASSIVE RECREATION (WALKING, JOGGING, VIEWING, LAWNS, SEATING AREAS)
- SPORTS FIELDS
- WATER USES (KAYAKING AND OTHER ACTIVITIES)

WHAT'S MISSING:

- WATER USES (BEACH, NATURAL HABITAT, BOAT ACCESS)
- PASSIVE RECREATION (TREES, GREENERY, OPEN SPACES, SHADE)
- MORE BALLFIELDS
- YEAR-ROUND USE

JAMES CORNER FIELD OPERATIONS

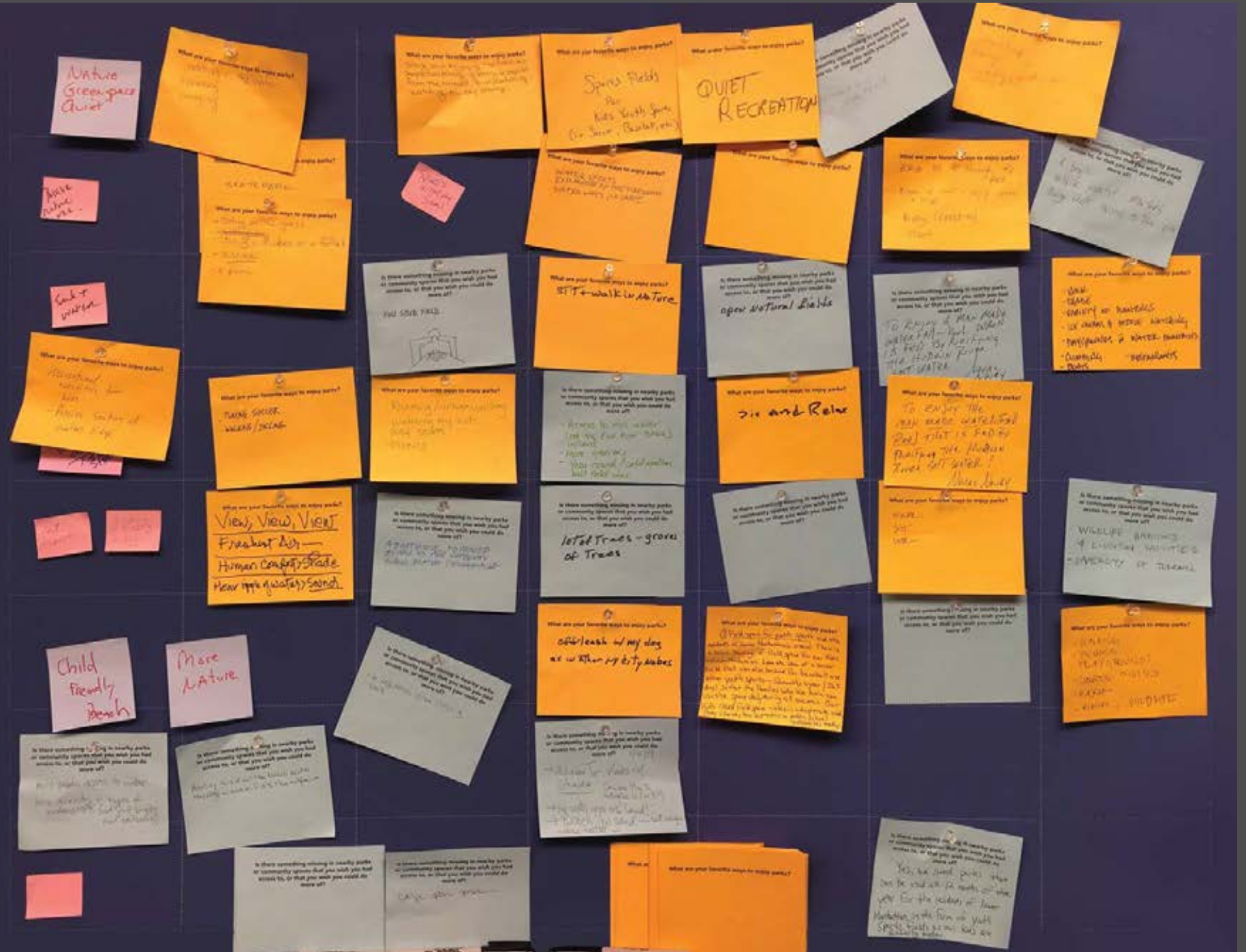
CONTEXT

WHAT ARE YOUR FAVORITE WAYS TO ENJOY PARKS?

IS THERE SOMETHING MISSING IN NEARBY PARKS OR COMMUNITY SPACES THAT YOU WISH YOU HAD ACCESS TO, OR THAT YOU WISH YOU COULD DO MORE OF?

ANSWER THE QUESTIONS ON YOUR NOTECARDS AND PIN THEM TO THE BOARD

JAMES CORNER FIELD OPERATIONS



FEEDBACK FROM MARCH 6TH CB MEETING

WHAT MAKES GANSEVOORT PENINSULA SPECIAL?

- THE SETTING
- OPPORTUNITY FOR A GREEN & PEACEFUL PARK THAT TAKES ADVANTAGE OF VIEWS & SURROUNDINGS
- OPPORTUNITY FOR A BEACH, IN-WATER ACCESS, AND HABITAT
- OPPORTUNITY FOR LARGE SPORTS FIELDS

JAMES
CORNER
FIELD
OPERATIONS

IDENTITY

WHAT MAKES GANSEVOORT PENINSULA A SPECIAL OPPORTUNITY?



WHAT ARE KEY WORDS THAT SPEAK TO THE ATMOSPHERE YOU HOPE THE SITE WILL HAVE IN THE FUTURE?



USE THE POST-ITS TO PROVIDE YOUR ANSWERS

JAMES
CORNER
FIELD
OPERATIONS



03/26 COMMUNITY CHARRETTE



SCALE & COMPATIBILITY EXERCISE

TABLE 1:

- **PRIMARY EMPHASIS:** PASSIVE RECREATION
- **QUALITY AND CHARACTER OF THE BEACH:** INTERTIDAL HABITAT AND BOAT ACCESS TO THE SOUTH
- **OTHER PROGRAMS:** PLAY AREAS AND A LAWN

TABLE 2:

- **PRIMARY EMPHASIS:** SPORTS FIELDS, STRESSING THE IMPORTANCE OF THE FULL SIZED PETITION FIELD (INCLUDING TWO LITTLE LEAGUE SOFTBALL OVERLAYS)
- **QUALITY AND CHARACTER OF THE BEACH:** A SANDY BEACH AND INTERTIDAL HABITAT TO THE SOUTH
- **OTHER PROGRAMS:** A LAWN ALONG THE WESTERN EDGE, A SKATEPARK, AS WELL AS A SMALL DOG RUN AND PLAY AREA



SCALE & COMPATIBILITY EXERCISE

TABLE 3:

- **PRIMARY EMPHASIS:** A BALANCE OF PASSIVE RECREATION AND SPORTS FIELDS (INCLUDING LITTLE LEAGUE SOFTBALL WITH A U-10 SOCCER FIELD OVERLAY)
- **QUALITY AND CHARACTER OF THE BEACH:** AN IN-WATER BEACH WITH INTERTIDAL HABITAT AND A BOATHOUSE TO THE SOUTH
- **OTHER PROGRAMS:** A GREENHOUSE, COMMUNITY GARDEN, AND SMALL PLAYGROUND

TABLE 4:

- **PRIMARY EMPHASIS:** SPORTS FIELDS INCLUDING TWO U-10 SOCCER FIELDS WITH A LITTLE LEAGUE SOFTBALL OVERLAY
- **QUALITY AND CHARACTER OF THE BEACH:** CREATION OF A COVE TO THE SOUTHEAST WITH A SANDY BEACH, INTERTIDAL HABITAT AND BOAT ACCESS
- **OTHER PROGRAMS:** PASSIVE RECREATION THAT FORM A BUFFER AROUND THE SPORTS FIELDS WITH SMALL PLAY AREAS, A DOG RUN AND LAWNS



SCALE & COMPATIBILITY EXERCISE

TABLE 5:

- **PRIMARY EMPHASIS:** A BALANCE OF PASSIVE RECREATION AND SPORTS FIELDS (INCLUDING A LARGE LAWN ON THE WESTERN EDGE AND REDUCED VERSION OF THE PETITION FIELD TO THE EAST)
- **QUALITY AND CHARACTER OF THE BEACH:** A SANDY BEACH TO THE SOUTH AND INTERTIDAL HABITAT TO THE NORTH
- **OTHER PROGRAMS:** A LARGE DOG RUN, AN IN-RIVER POOL/ICE RINK, SMALL PLAY AREA AND SHOWCASING HISTORY

TABLE 6:

- **PRIMARY EMPHASIS:** SPORTS FIELDS, STRESSING THE IMPORTANCE OF THE FULL SIZED PETITION FIELD (INCLUDING TWO LITTLE LEAGUE SOFTBALL OVERLAYS)
- **QUALITY AND CHARACTER OF THE BEACH:** A SANDY BEACH WITH BOAT ACCESS TO THE SOUTH WITH AND INTERTIDAL HABITAT TO THE WEST
- **OTHER PROGRAMS:** PASSIVE RECREATION, A DOG RUN AND PLAY AREA



SCALE & COMPATIBILITY EXERCISE

TABLE 7:

- **PRIMARY EMPHASIS:** SPORTS FIELDS, HOWEVER PARTICIPANTS FELT A REDUCED VERSION OF THE PETITION FIELD WAS SUFFICIENT INCLUDING A U-10 SOCCER FIELD OVERLAY.
- **QUALITY AND CHARACTER OF THE BEACH:** A SANDY BEACH AND INTERTIDAL HABITAT TO THE SOUTH
- **OTHER PROGRAMS:** A LAWN ALONG THE WESTERN EDGE, A SKATEPARK, AS WELL AS A SMALL DOG RUN AND PLAY AREA

TABLE 8:

- **PRIMARY EMPHASIS:** PASSIVE RECREATION INCLUDING A LARGE LAWN FACING WEST
- **QUALITY AND CHARACTER OF THE BEACH:** A SANDY BEACH INCLUDING BOAT ACCESS AND A BOAT HOUSE TO THE SOUTH AND INTERTIDAL HABITAT TO THE NORTH
- **OTHER PROGRAMS:** SPORTS FIELDS (A LITTLE LEAGUE SOFTBALL WITH A U-8 SOCCER FIELD OVERLAY), A DOG RUN AND SHOWCASING HISTORY



SCALE & COMPATIBILITY EXERCISE

TABLE 9:

- **PRIMARY EMPHASIS:** A BALANCE OF PASSIVE RECREATION AND SPORTS FIELDS (INCLUDING LITTLE LEAGUE SOFTBALL WITH A U-10 SOCCER FIELD OVERLAY)
- **QUALITY AND CHARACTER OF THE BEACH:** A SANDY BEACH WITH BOAT ACCESS AND INTERTIDAL HABITAT TO THE SOUTH
- **OTHER PROGRAMS:** A DOG RUN

TABLE 10:

- **PRIMARY EMPHASIS:** PASSIVE RECREATION INCLUDING A LAWN ALONG THE WESTERN EDGE
- **QUALITY AND CHARACTER OF THE BEACH:** A SANDY BEACH AND INTERTIDAL HABITAT TO THE SOUTH
- **OTHER PROGRAMS:** A U-8 SOCCER FIELD, DOG RUN AND PLAY AREA



EXISTING CONDITIONS & NEW INFORMATION

TO THE SOUTH



SOUTHERN EDGE AT LOW TIDE



SOUTH EDGE

SECTION THROUGH EXISTING RIPRAP EDGE

4' 0' 8'
SCALE 1"=8'

MUDLINE & BEYOND

UNSTABLE SOIL "PUDDING"

EXISTING RIPRAP SLOPE

RELATIVELY GOOD SOIL

UPLAND

GOOD SOIL

+13 (100 YR BFE)

+8.3'

+2.35 MHHW

-2.45 MLLW

TOP OF EX RIPRAP SLOPE

+5'

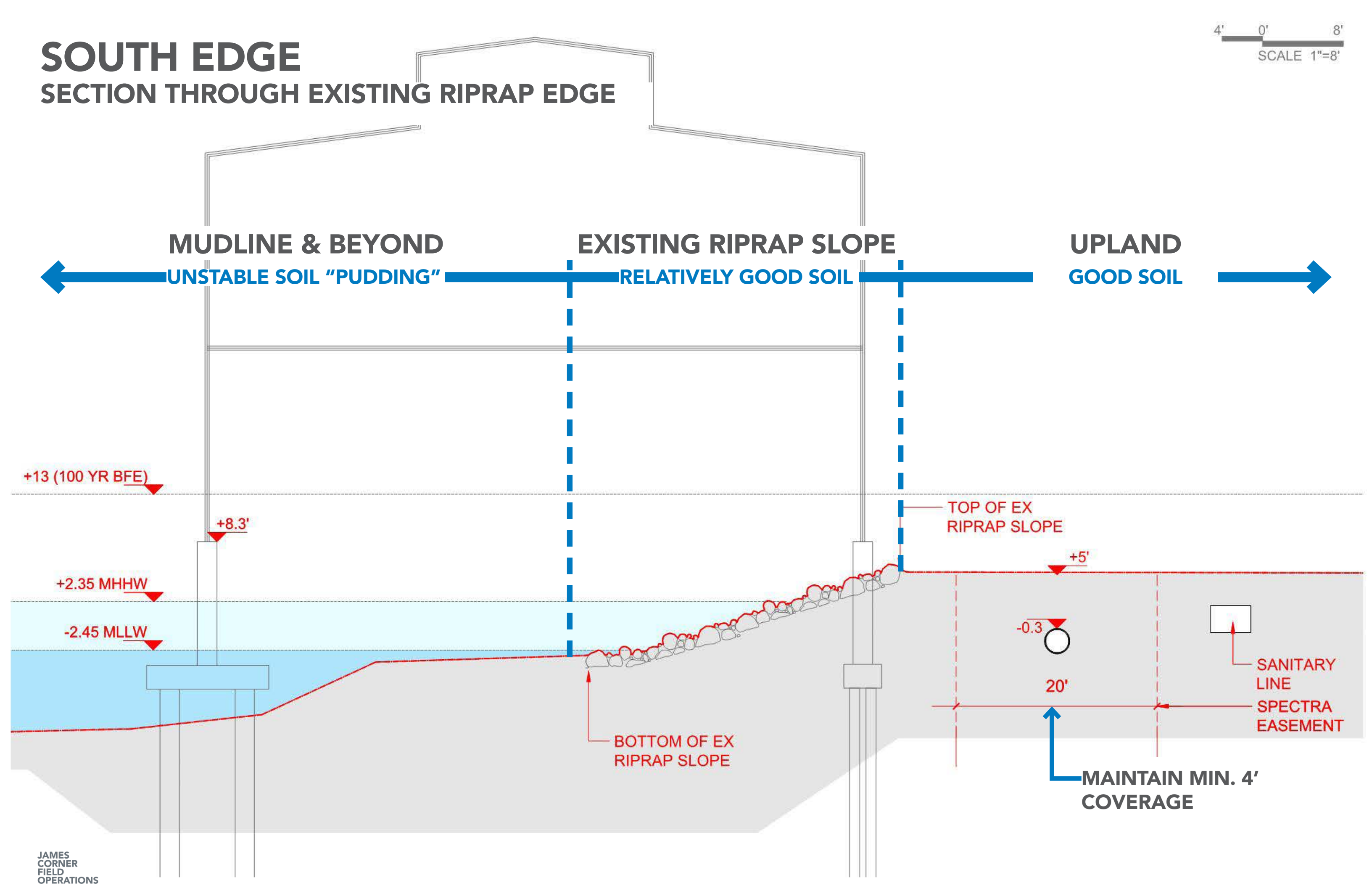
-0.3

20'

BOTTOM OF EX RIPRAP SLOPE

SANITARY LINE
SPECTRA EASEMENT

MAINTAIN MIN. 4' COVERAGE



TO THE NORTH

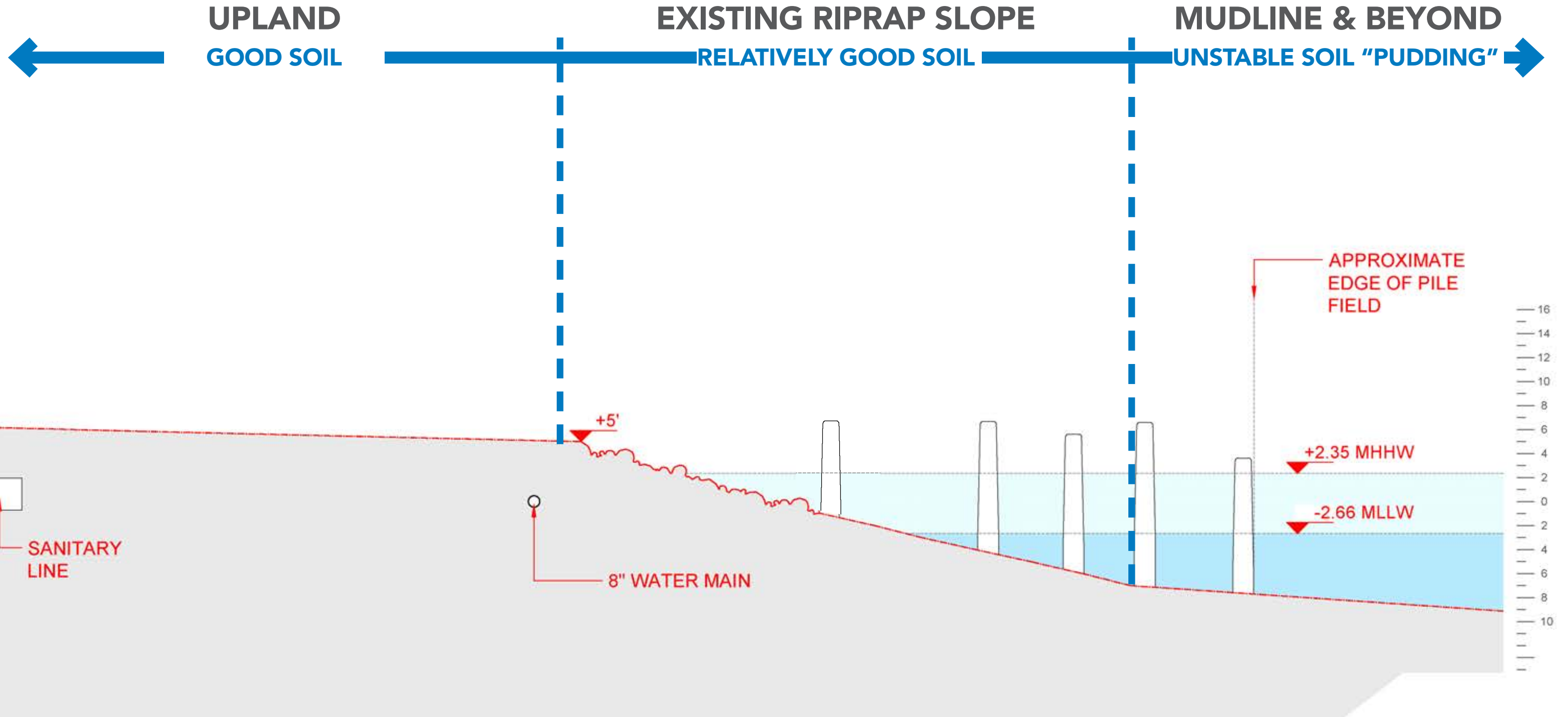


NORTH EDGE AT LOW TIDE



NORTH EDGE

SECTION THROUGH EXISTING RIPRAP EDGE

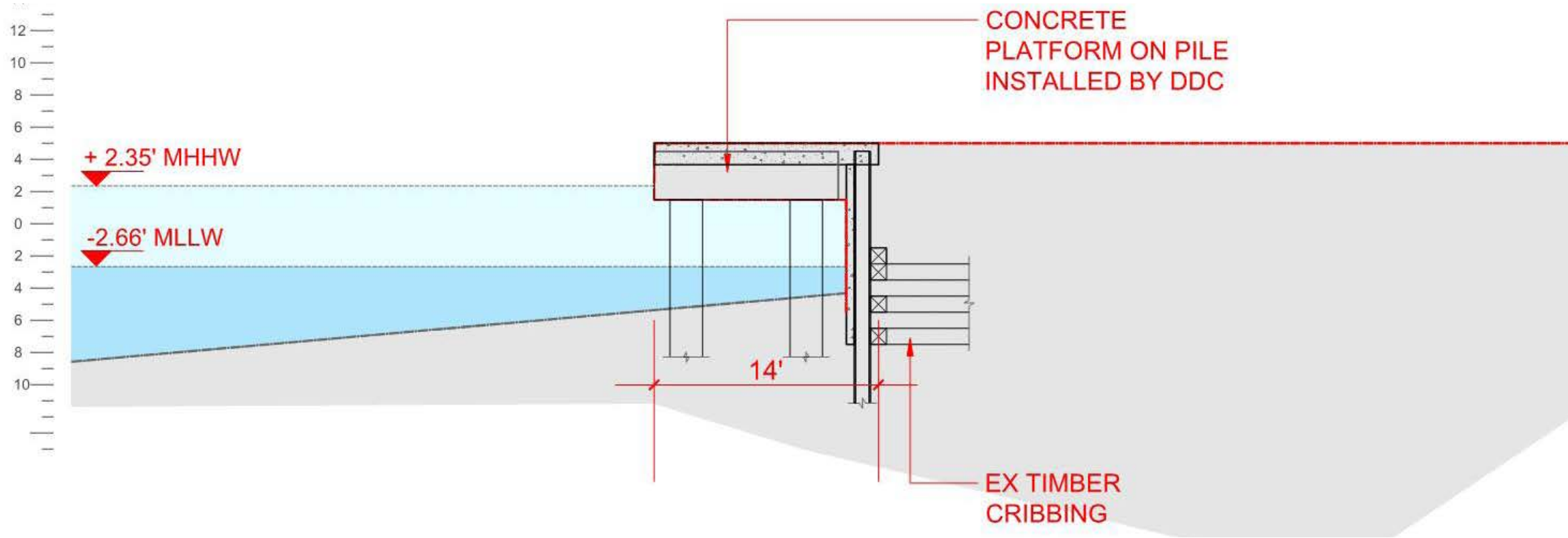
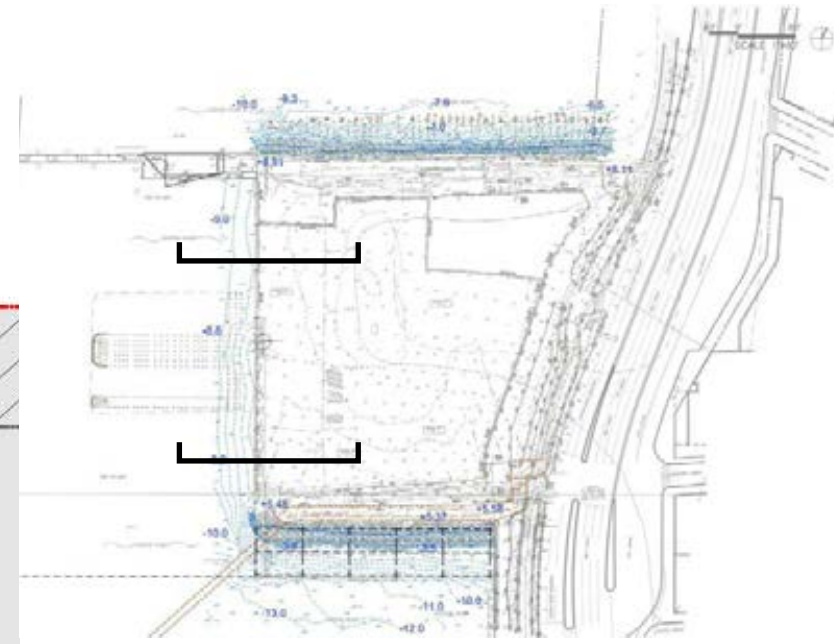
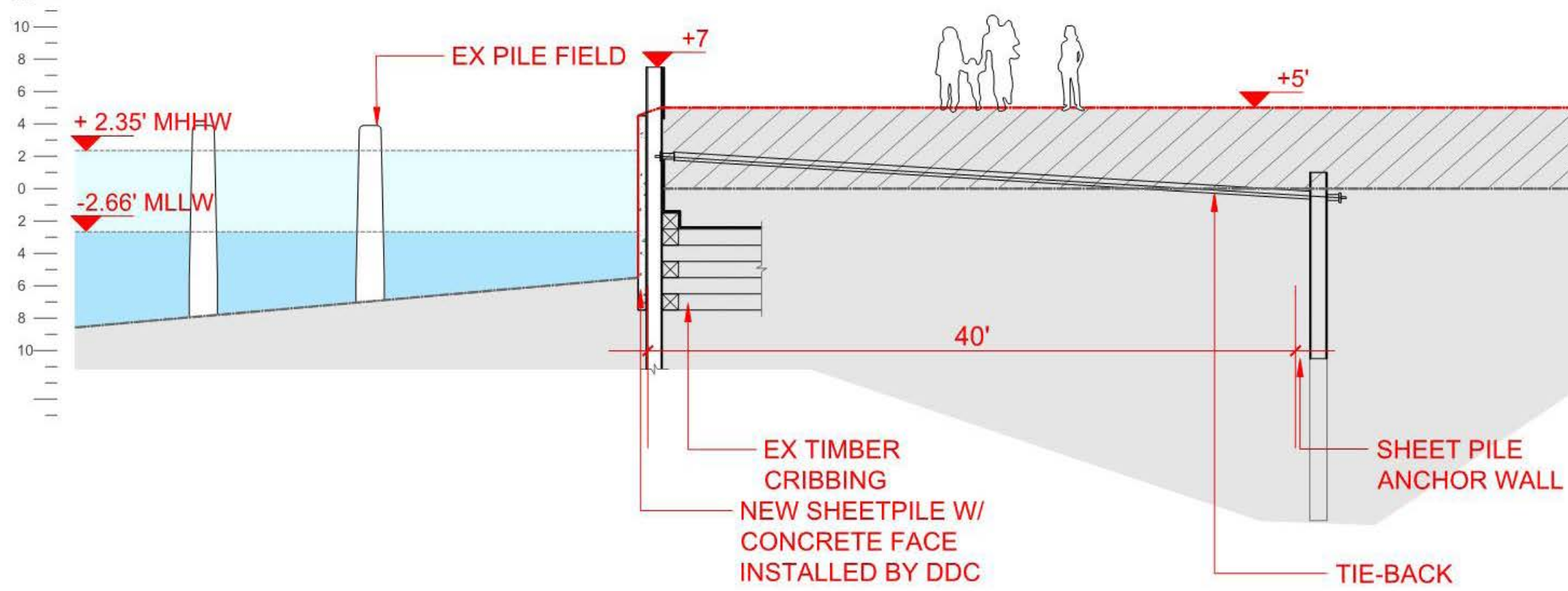


WEST EDGE



WEST EDGE

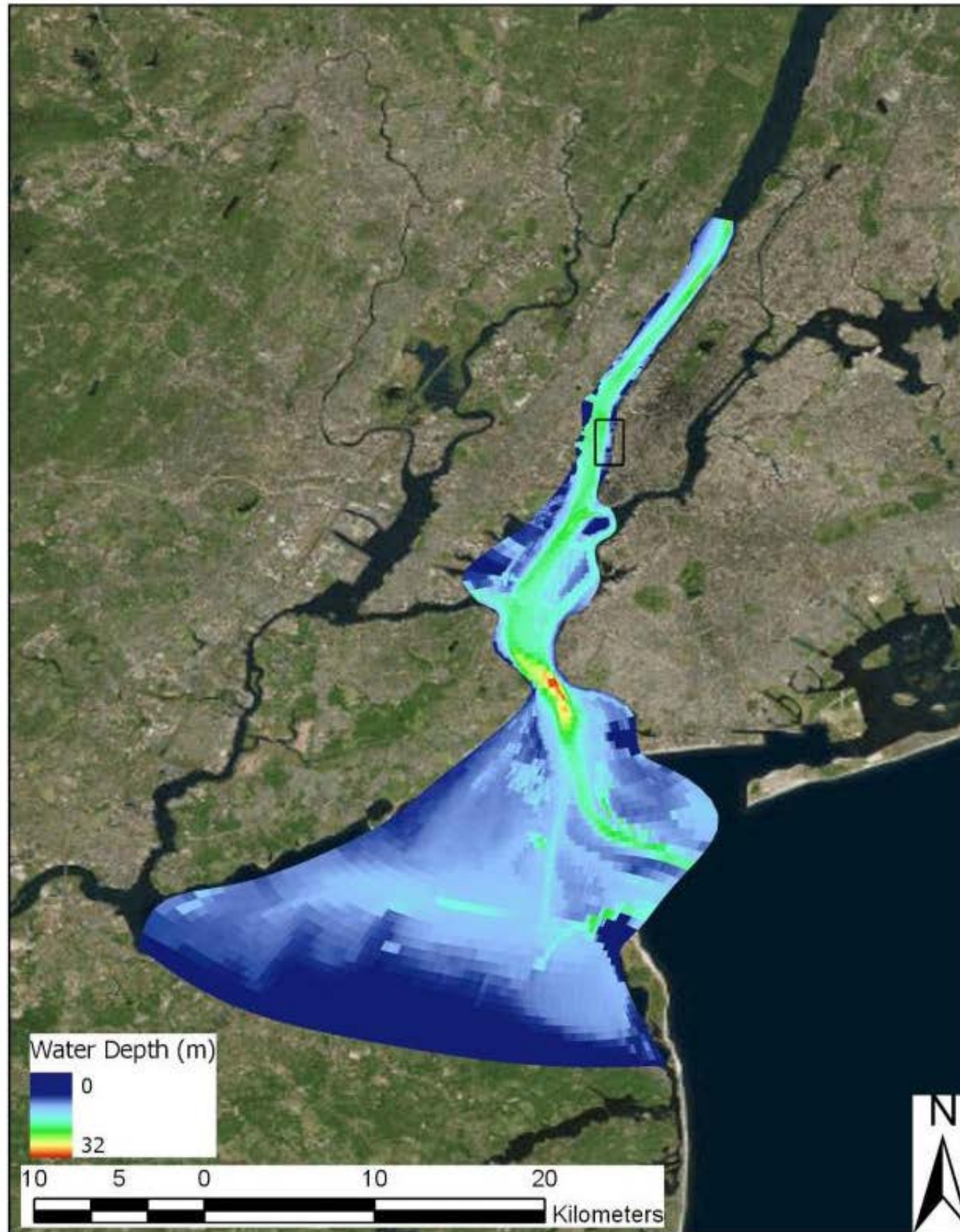
SECTION THROUGH EXISTING RIPRAP EDGE



TO THE EAST

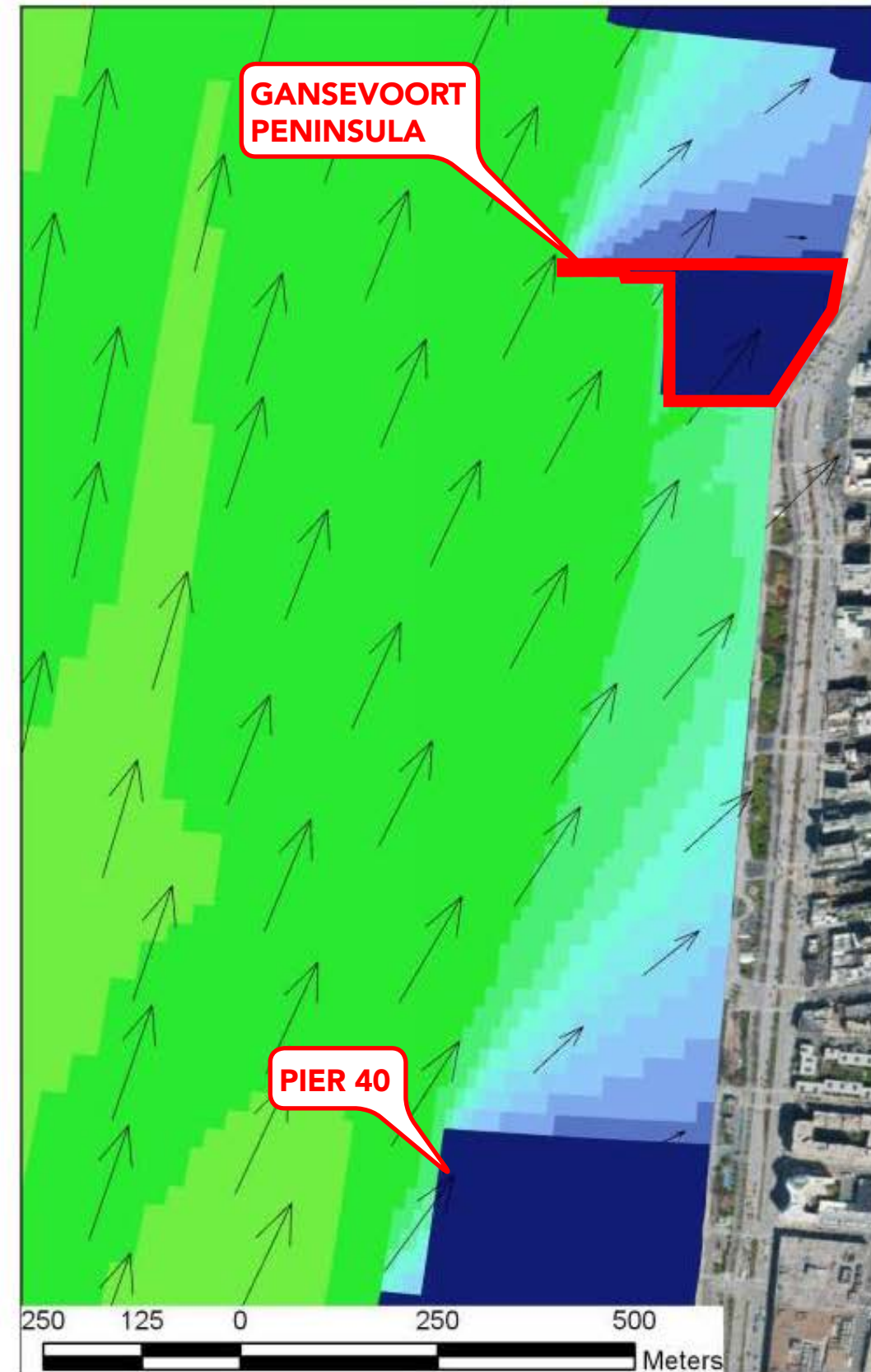
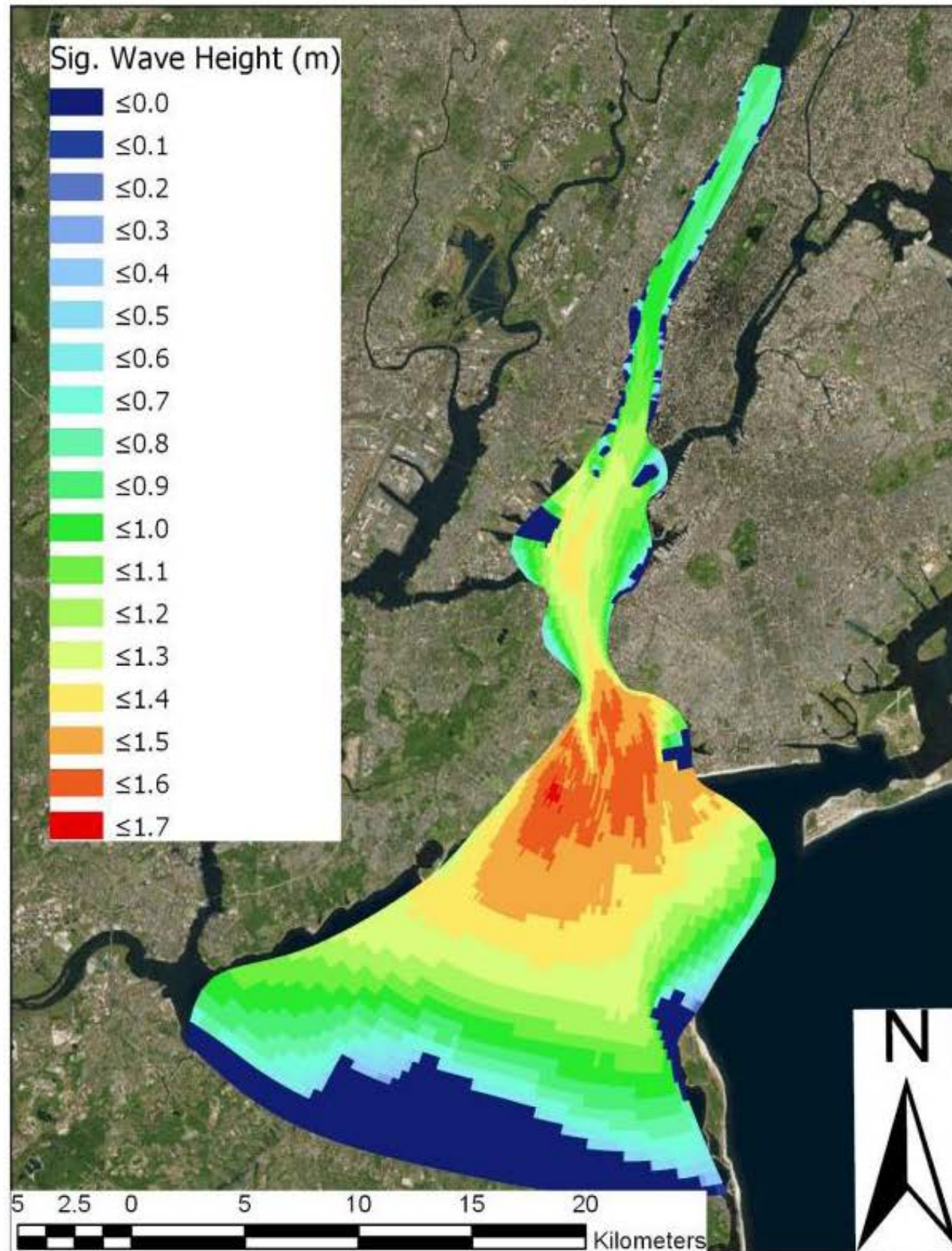


BATHYMETRIC MODEL



Delft3D bathymetry model used for wave modeling

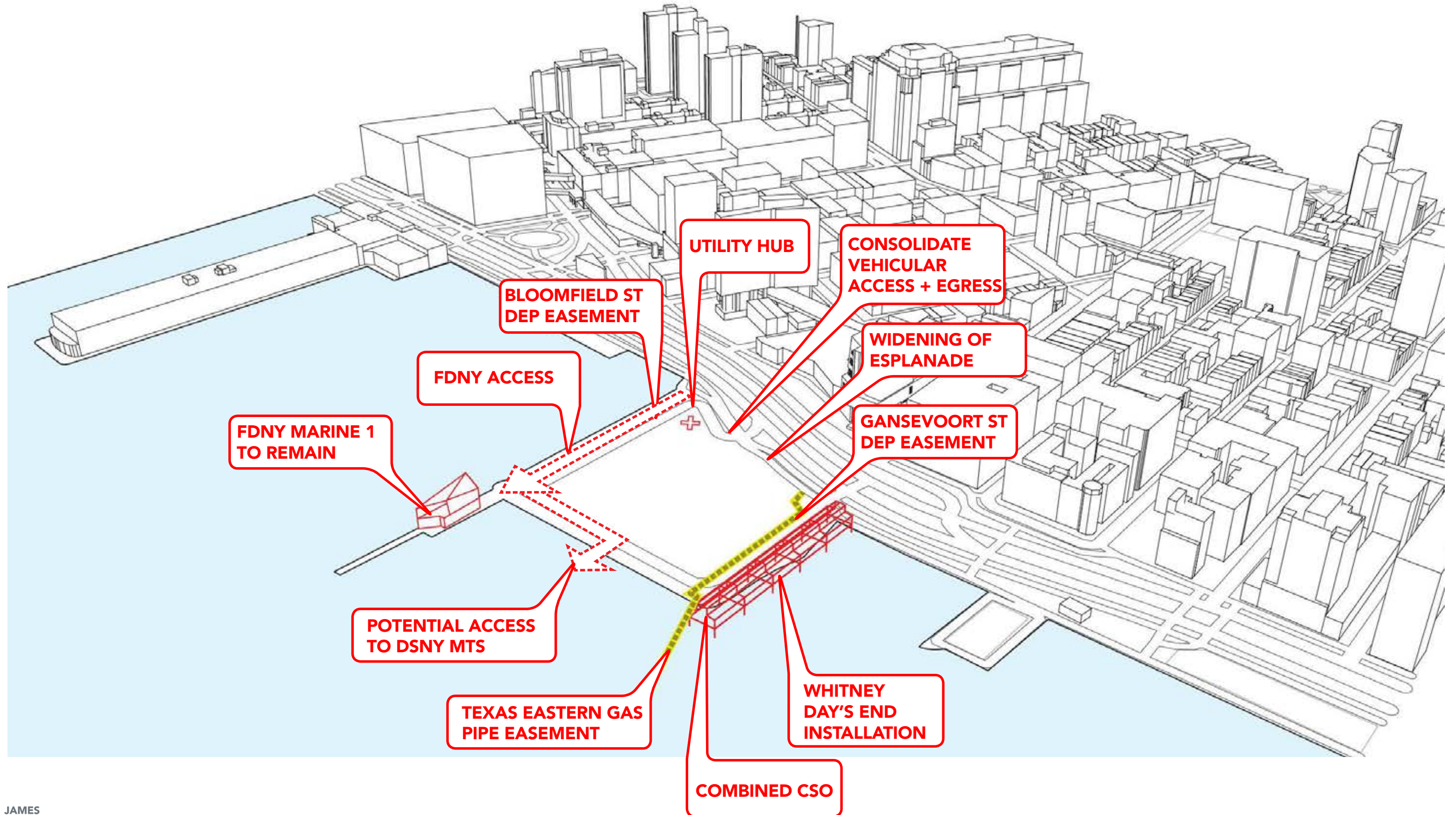
WAVE MODEL



Wave model results for 100-year Return Period, winds south-southwest at 51.5 mph

EXISTING CONDITIONS

COORDINATION & ACCESS



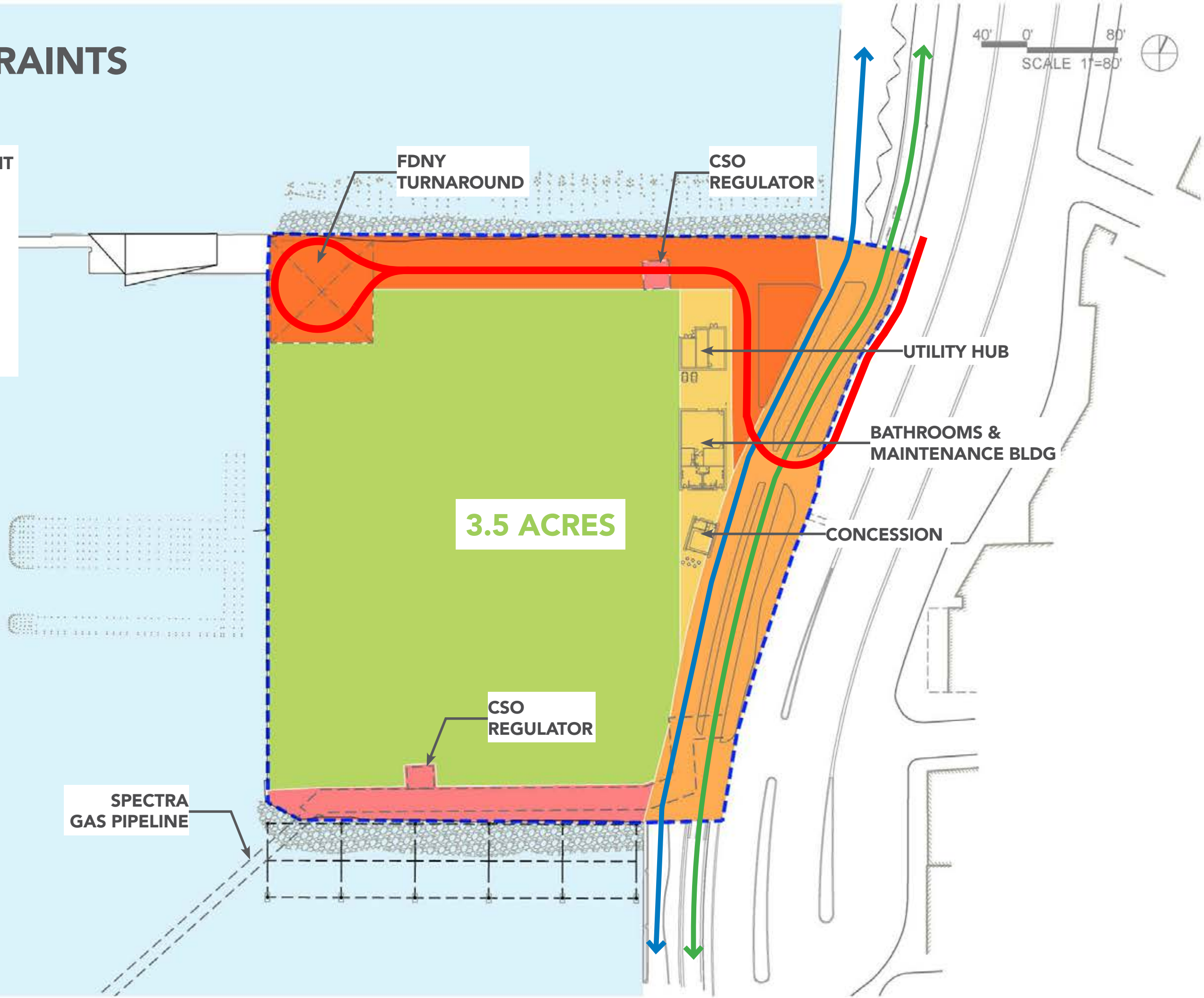
SPATIAL CONSTRAINTS



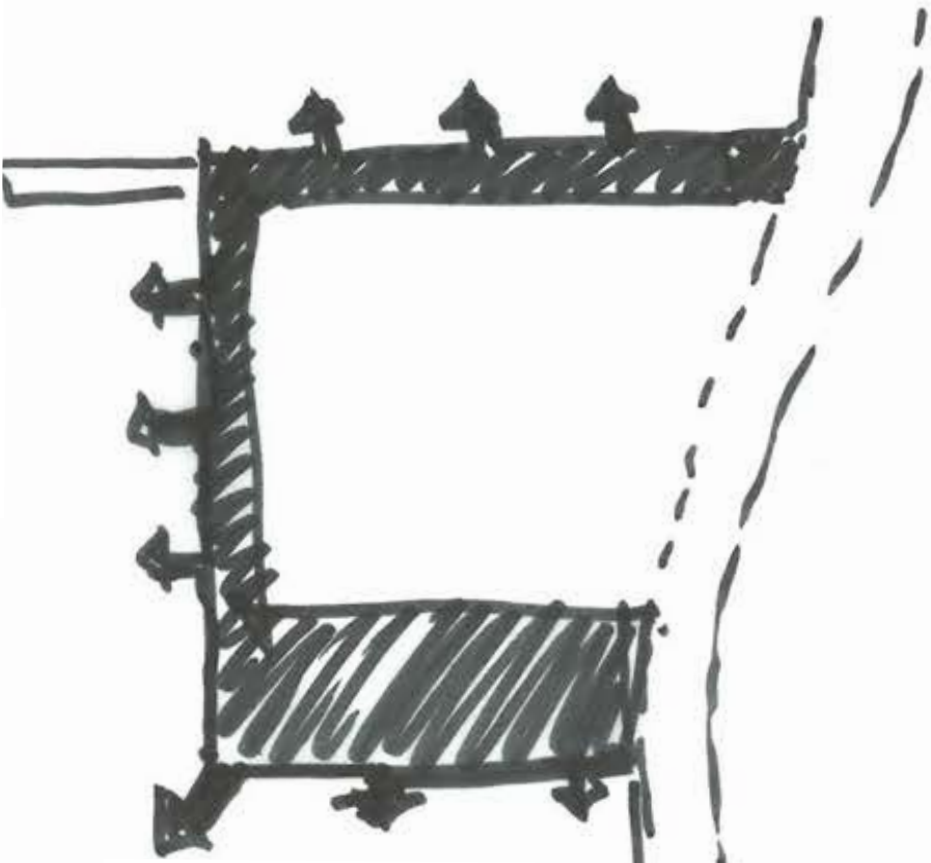
5.5 ACRES

SPATIAL CONSTRAINTS

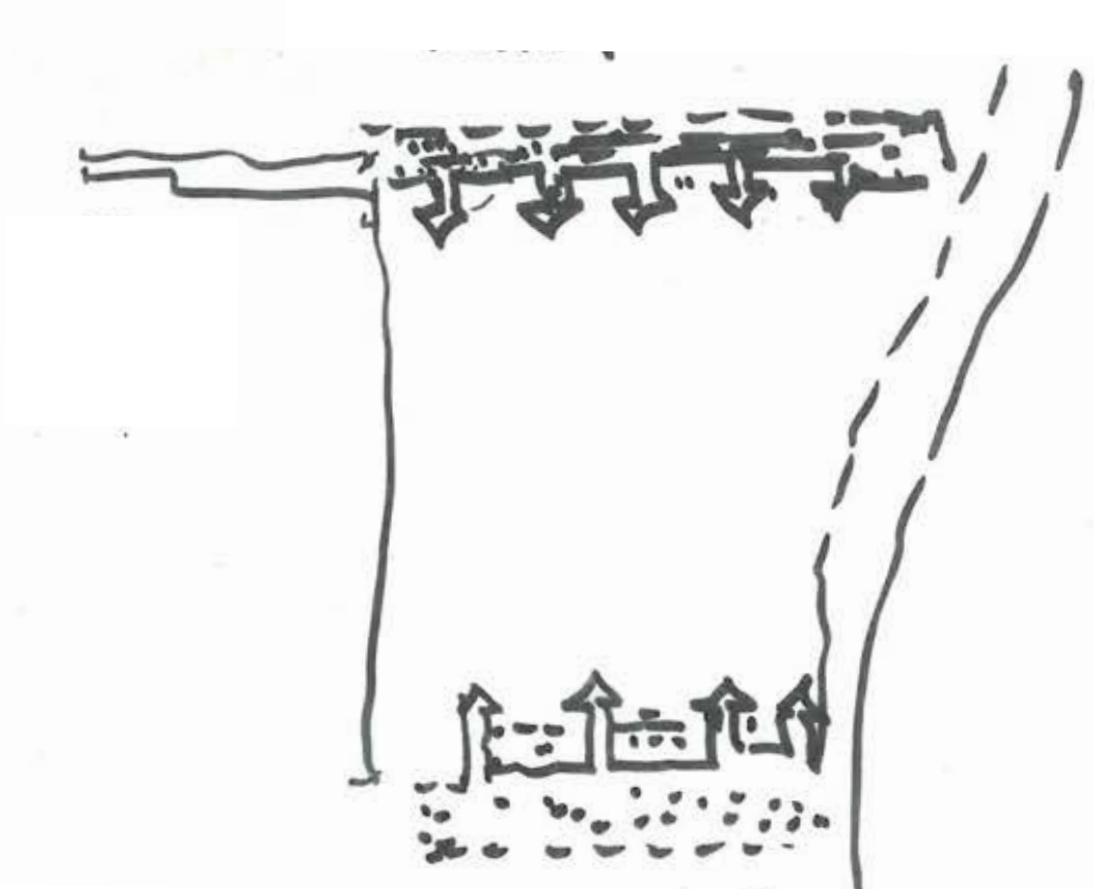
- GREENWAY REALIGNMENT
- FDNY ACCESS
- CRITICAL UTILITIES
- BUILDING AREA
- REMAINING AREA
- PEDESTRIAN
- BIKE
- FDNY ACCESS ROUTE



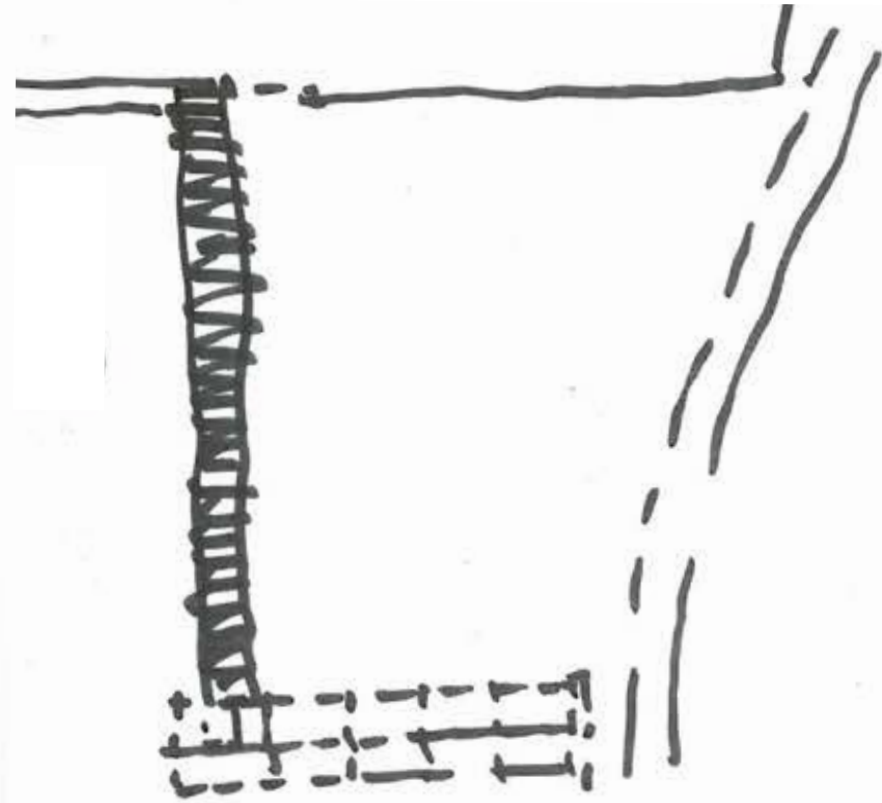
THEMES



MAXIMIZE WATER'S
EDGES + VIEWS



ENGAGE THE ESTUARY



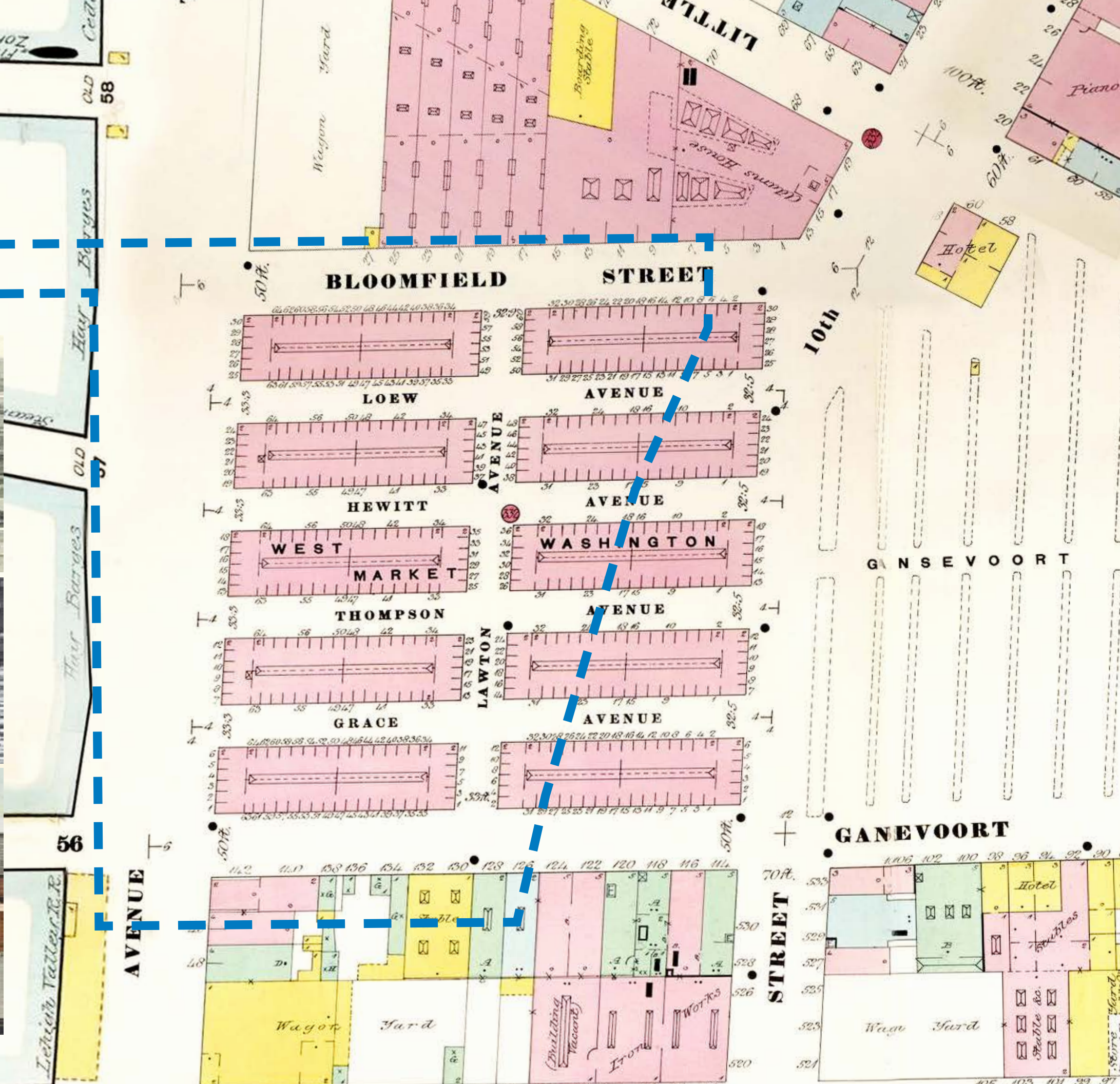
CELEBRATE SITE'S HISTORY

13TH AVENUE

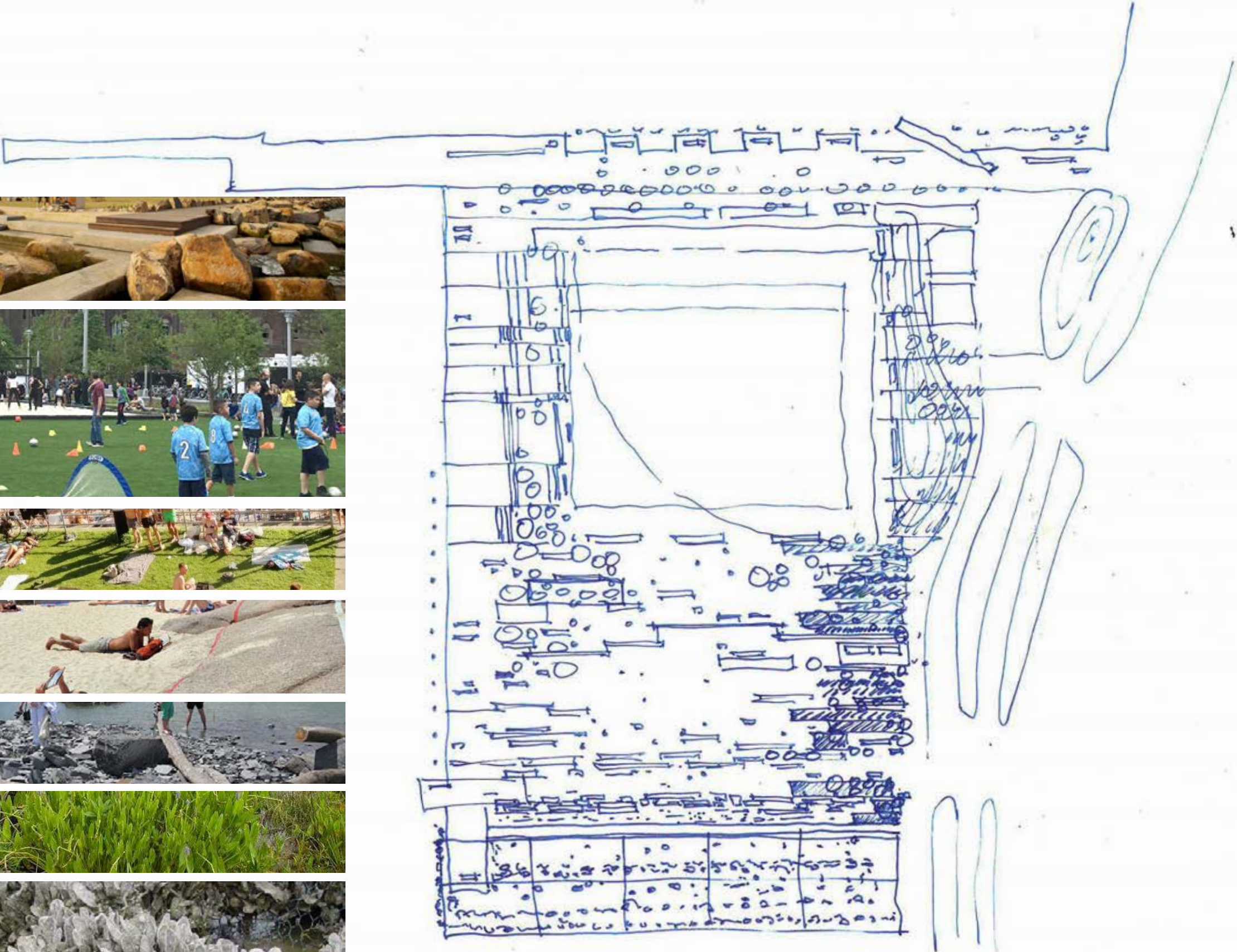
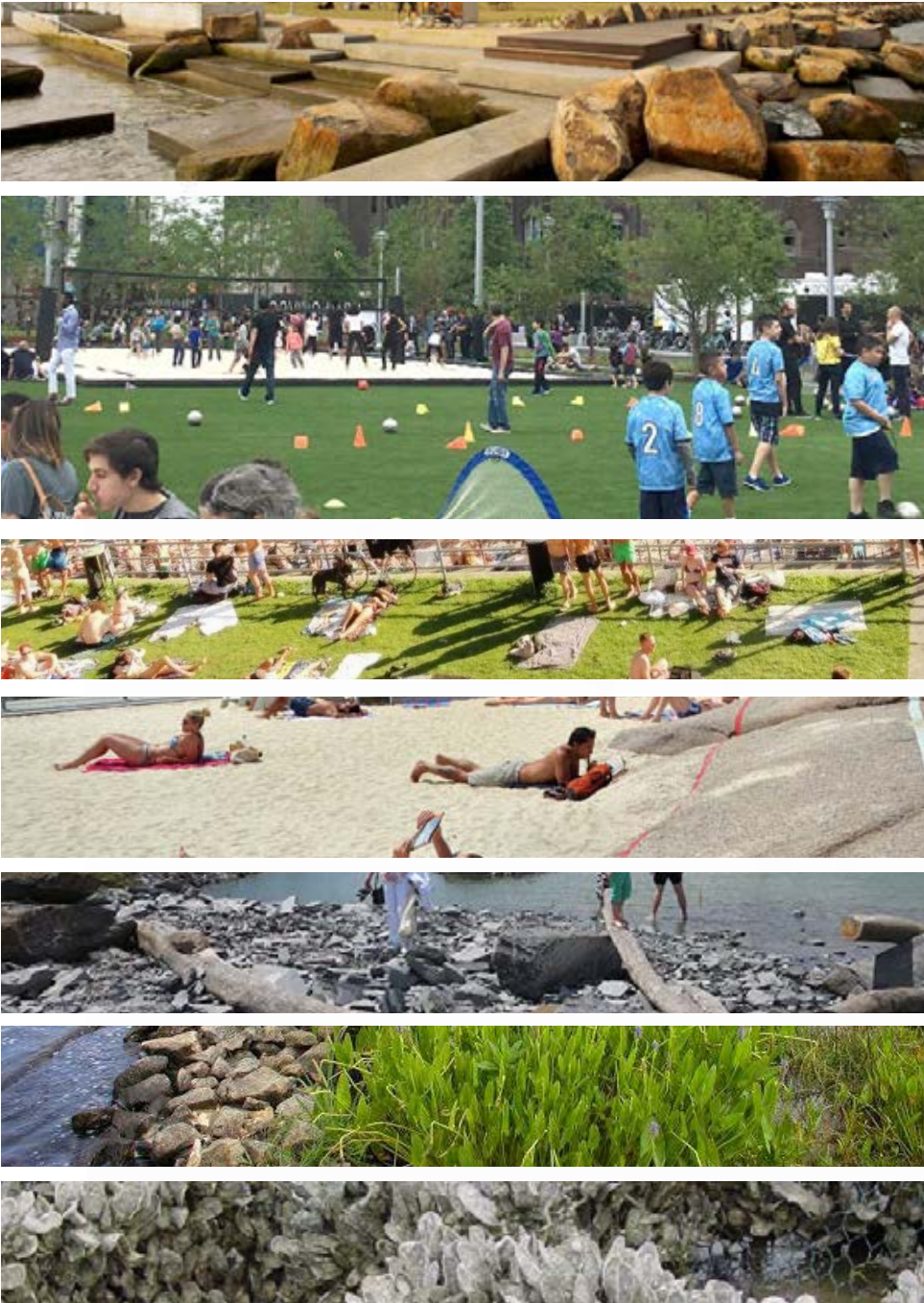
I V E R



JAMES CORNER FIELD OPERATIONS



CONCEPT SKETCH

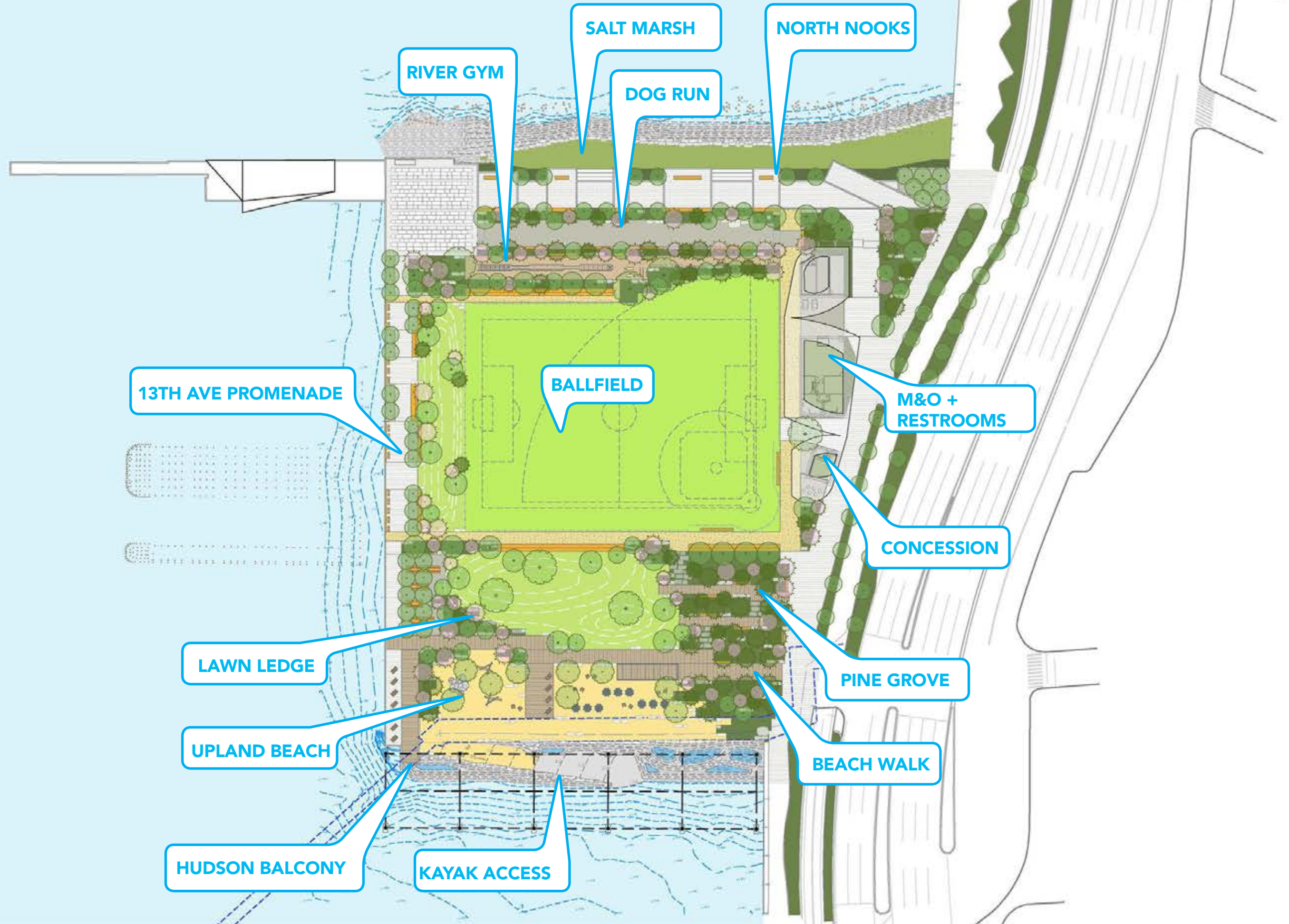


CONCEPT PLAN



PROGRAMS & USES

40' 0' 80'
SCALE 1"=80'



HABITAT ENHANCEMENT

40' 0' 80'
SCALE 1"=80'



ADDITIONAL HABITAT OPPORTUNITIES



TIDAL POOLS



Source: Reef Ball Foundation



REEF BALLS



PILE ENCASEMENT



OYSTER GABIONS

BUILDING UPON HRPT ESTUARY LAB



THE SALT MARSH AT GANSEVOORT PENINSULA WOULD PROVIDE A SIGNATURE ESTUARY HABITAT TO ROUND OUT HRPT'S EXISTING PROGRAM

POTENTIAL EDUCATIONAL PROGRAMMING AT THIS LOCATION INCLUDES:

- MARSH WALK GET-DOWN
- TIDAL POOL ACCESS
- WATER QUALITY MONITORING



Photos courtesy of HRPT

SITE CIRCULATION

- PEDESTRIAN
- BIKE
- BIKE RACKS
- FDNY VEHICLES

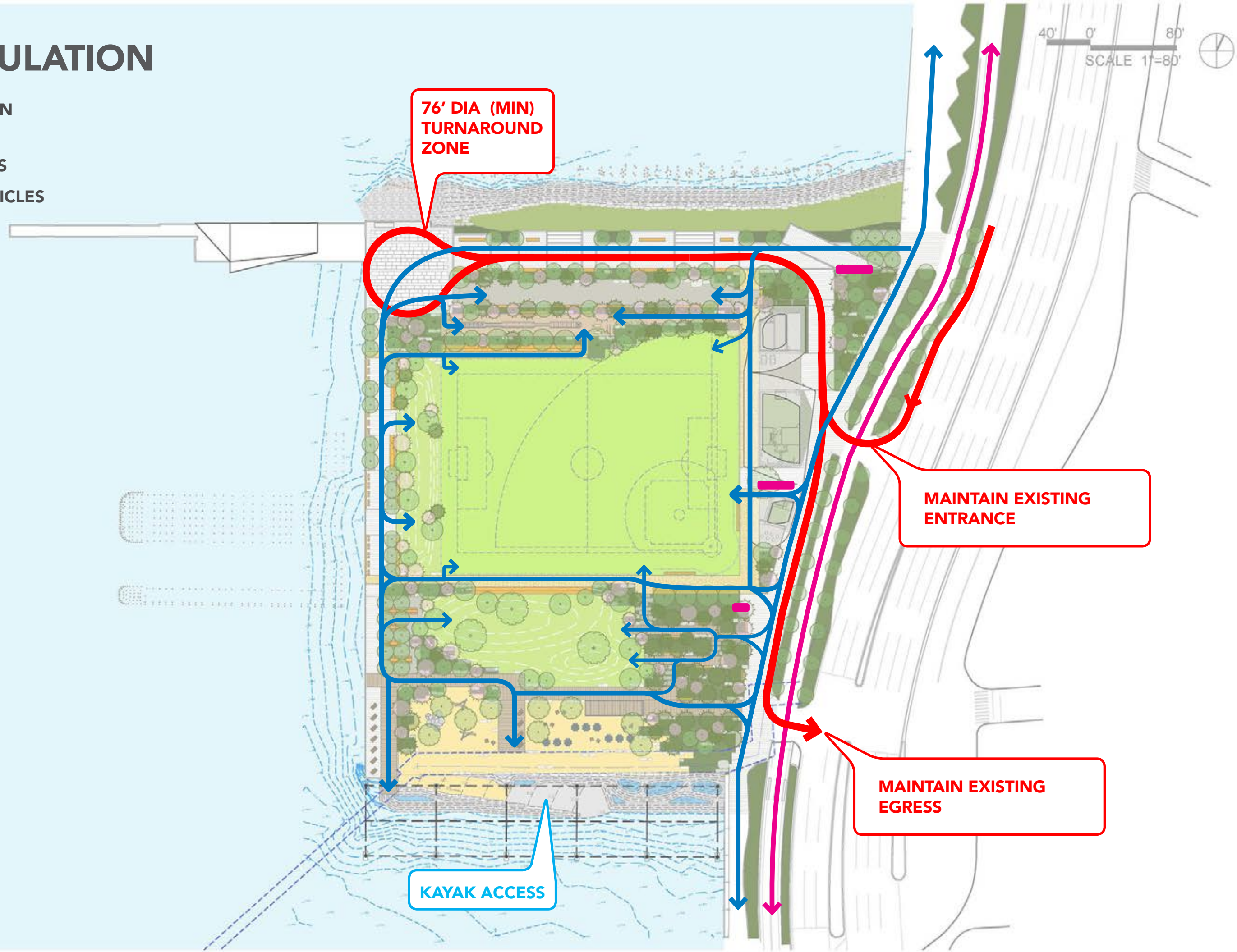
40' 0' 80'
SCALE 1"=80'

76' DIA (MIN)
TURNAROUND
ZONE

MAINTAIN EXISTING
ENTRANCE

MAINTAIN EXISTING
EGRESS

KAYAK ACCESS



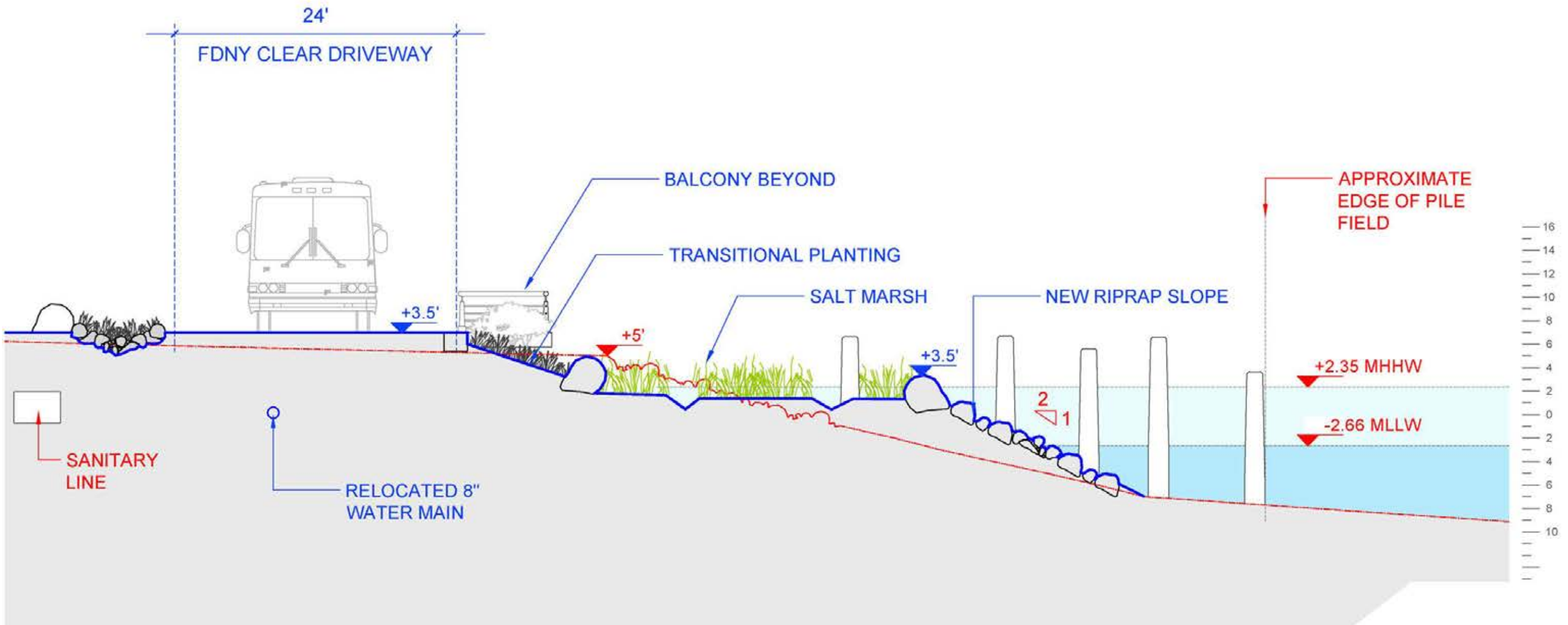
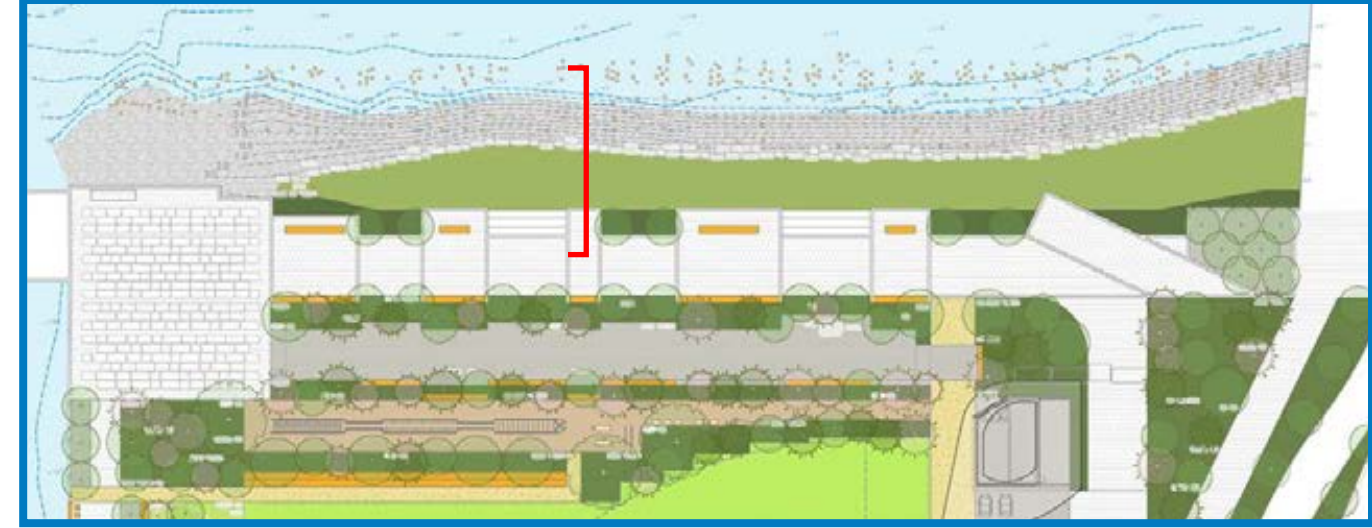
SITE AERIAL



NORTH EDGE AERIAL



SALT MARSH SECTION



GANSEVOORT SALT MARSH



DOG RUN - 250' X 24'



RIVER GYM



13TH AVE PROMENADE AERIAL



13TH AVE PROMENADE



SUNSET FROM THE WEST LAWN



13TH AVE PICNIC GROVE



SOUTH EDGE AERIAL



UNDER DAY'S END



BEACH PLAY



UPLAND BEACH



TIDAL POOLS



PINE GROVE RAMBLE



BALLFIELD - FROM LAWN



280' X 200' FIELD

20' 0' 40'
SCALE 1"=40'



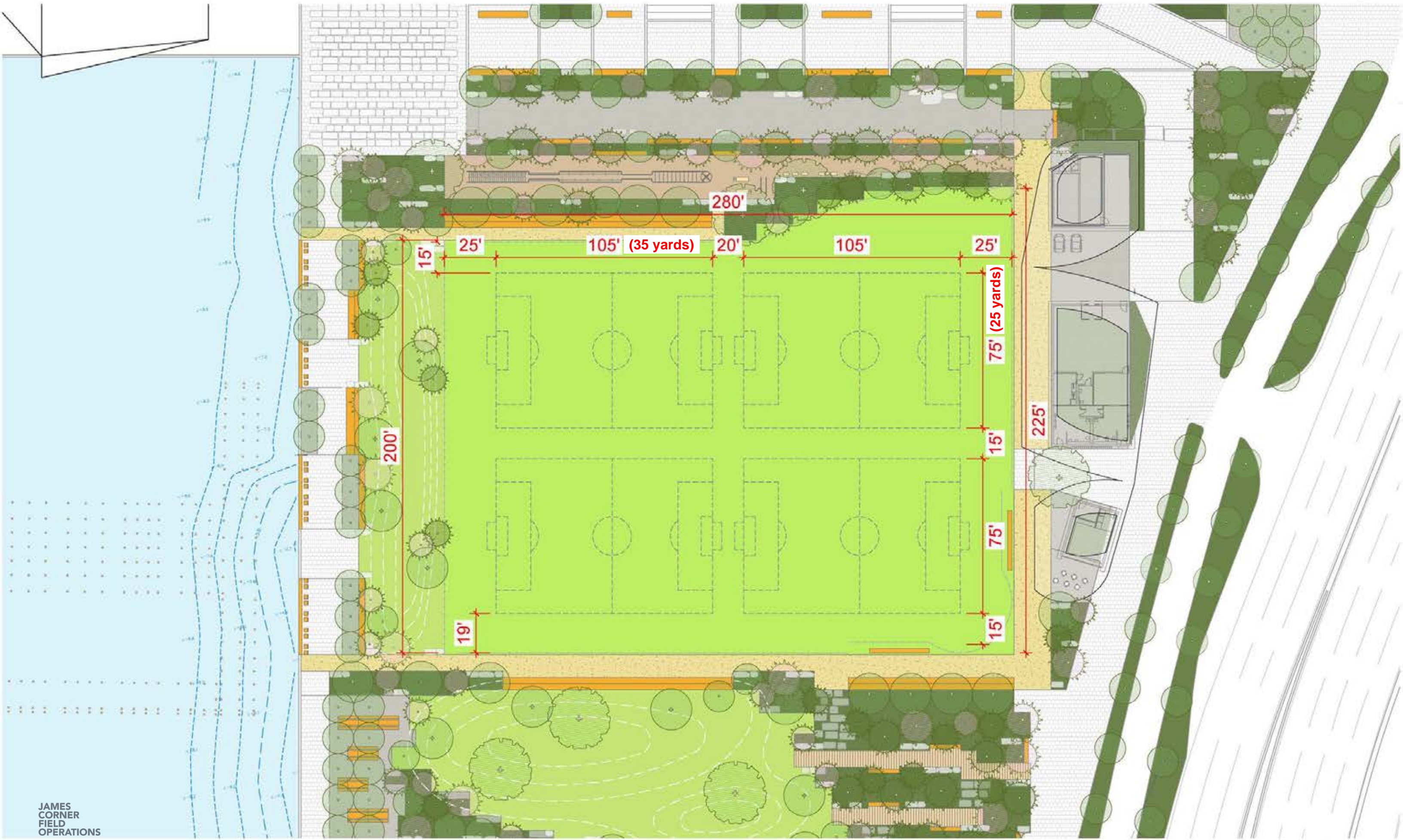
LITTLE LEAGUE

20' 0' 40'
SCALE 1"=40'



U-8 SOCCER FIELD X 4

20' 0' 40'
SCALE 1"=40'



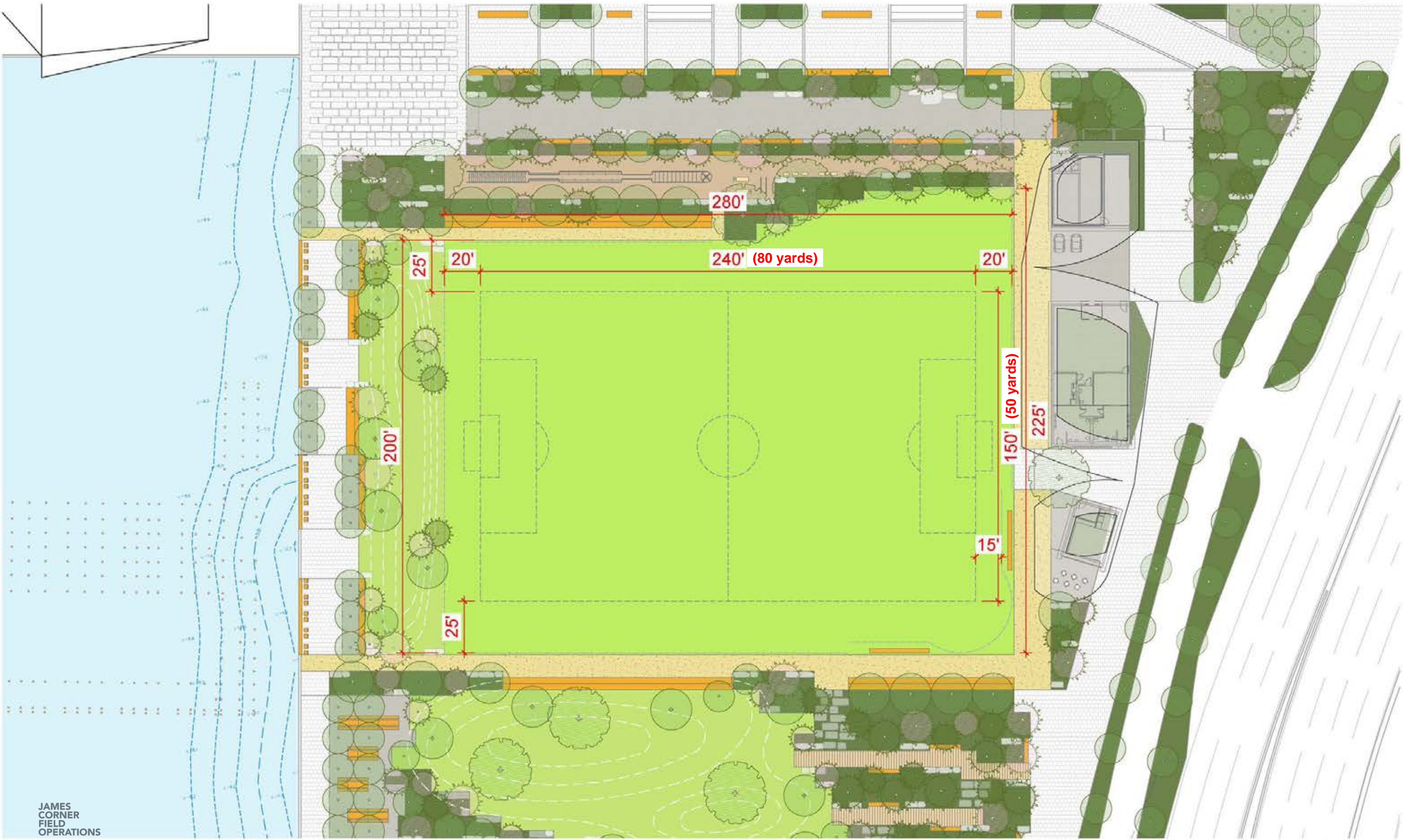
U-10 SOCCER FIELD X 2

20' 0' 40'
SCALE 1"=40'



U-11 SOCCER FIELD

20' 0' 40'
SCALE 1"=40'



U-12 SOCCER FIELD

20' 0' 40'
SCALE 1"=40'



BALLFIELD FENCING



- 16' FENCE
- 6' FENCE



280' FIELD

40' 0' 80'
SCALE 1"=80'



RIVER GYM



WEST LAWN



316' FIELD

40' 0' 80'
SCALE 1"=80'



RIVER GYM - ELIMINATED



WEST LAWN - ELIMINATED



316' FIELD WITH U-13 FIELD OVERLAY

20' 0' 40'
SCALE 1"=40'



ARCHITECTURE ↔ LANDSCAPE: ORGANIC TO MINERAL TO METAL

What is the relationship between our architecture and its landscape? We are situated in between the organic landscape material of our park and the lightness and ephemerality of metal frames of the Day's End installation.



West Manhattan skyline



Pier 55

FDNY Marine 1

Utility Building

Gansevoort Peninsula

Day's End

ARCHITECTURE ↔ LANDSCAPE: ORGANIC TO MINERAL TO METAL

We are considering evoking the history of the site: the oysters and/or oyster harvesting infrastructure and the historic materials of 13th Ave. promenade. These site aspects may inform the material or tectonic expression of the building.



Oyster shell



Wall of light cubed, Sean Scully



Oyster harvesting



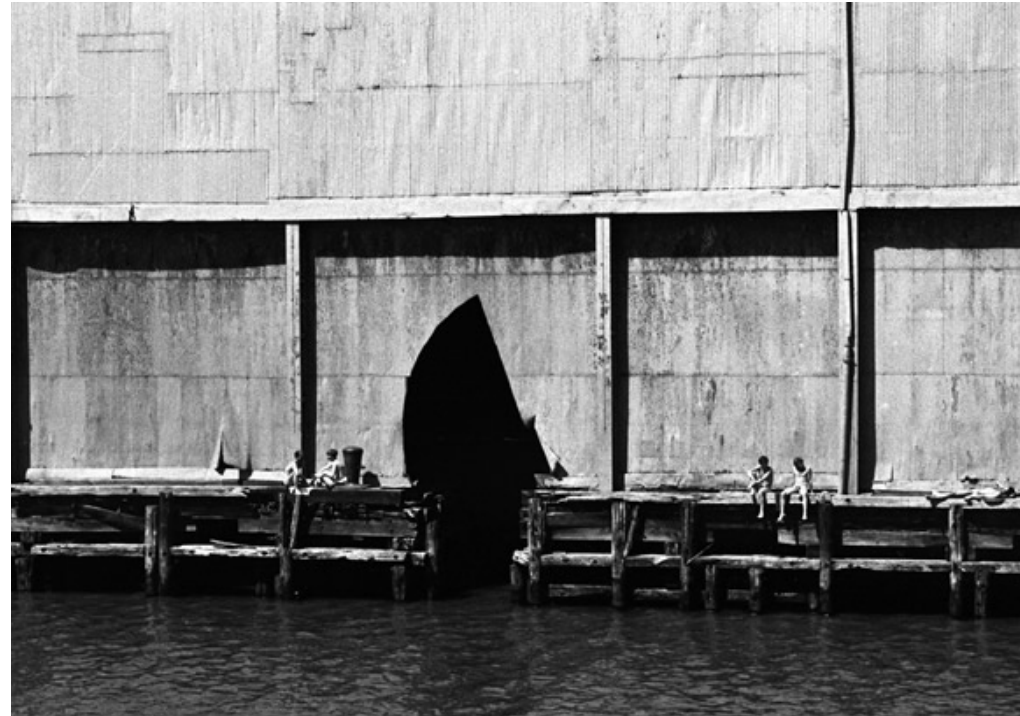
Oyster harvesting structures

ARCHITECTURE ↔ LANDSCAPE: HISTORICAL + LANDSCAPE CUTS

We are inspired by David Hammon's installation and its reference to Matta-Clark's Days End. Matta-Clark cut an existing warehouse in three places to create 'a temple for sun and light' and transform an utilitarian structure into an almost spiritual experience.

While Hammon's piece does not replicate the three cuts, we are loosely evoking them.

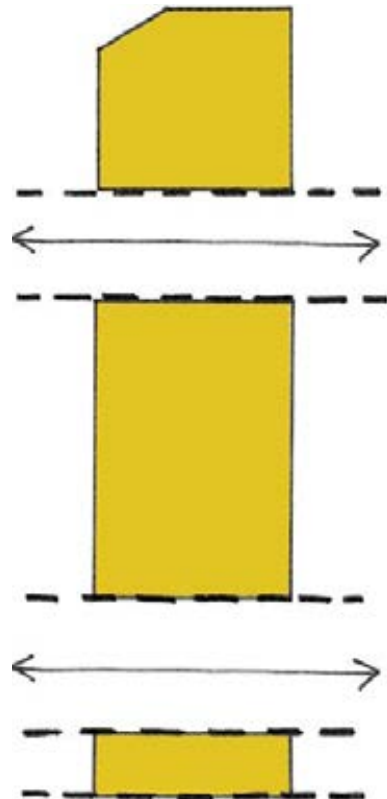
We are cutting into landscape to create connections to water and into the canopy to shape light and shadow.



Days End, Gordon Matta-Clark



Days End, Gordon Matta-Clark



Yohji Yamamoto store, New York, Ishigami Junya



Sea Level, New York, Richard Serra

ARCHITECTURE ↔ LANDSCAPE: ACTIVATE WALLS

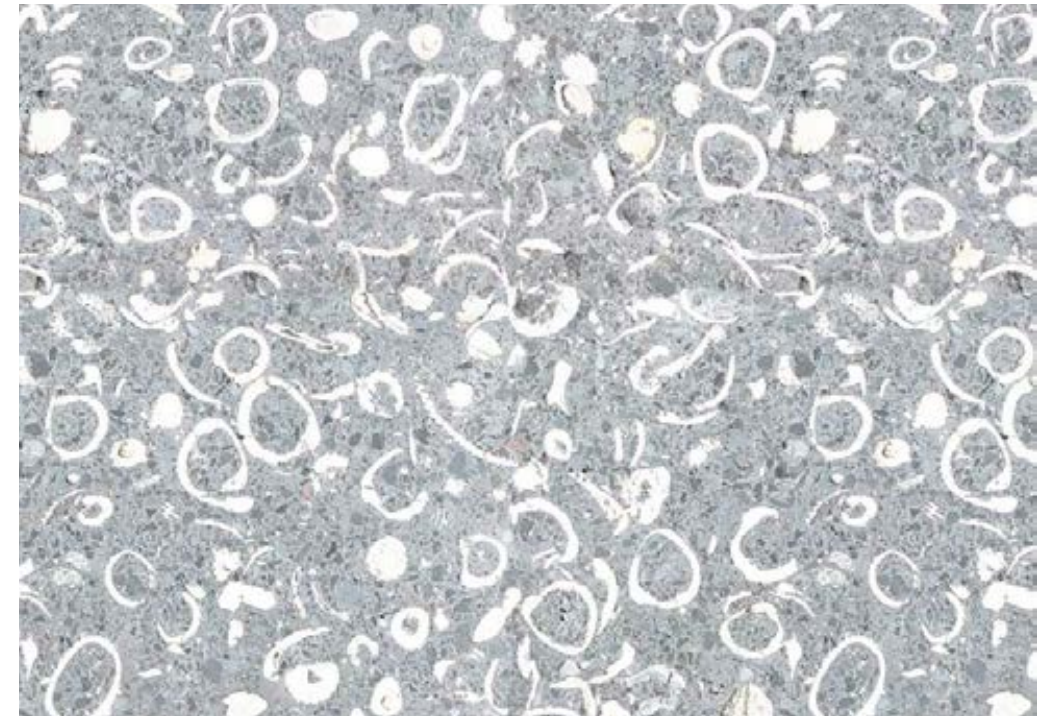
Our building program (largely storage and restrooms) is essentially opaque. How do you create visual relief for these building volumes?

Can we activate the walls if not with openings, then with texture or amenities?

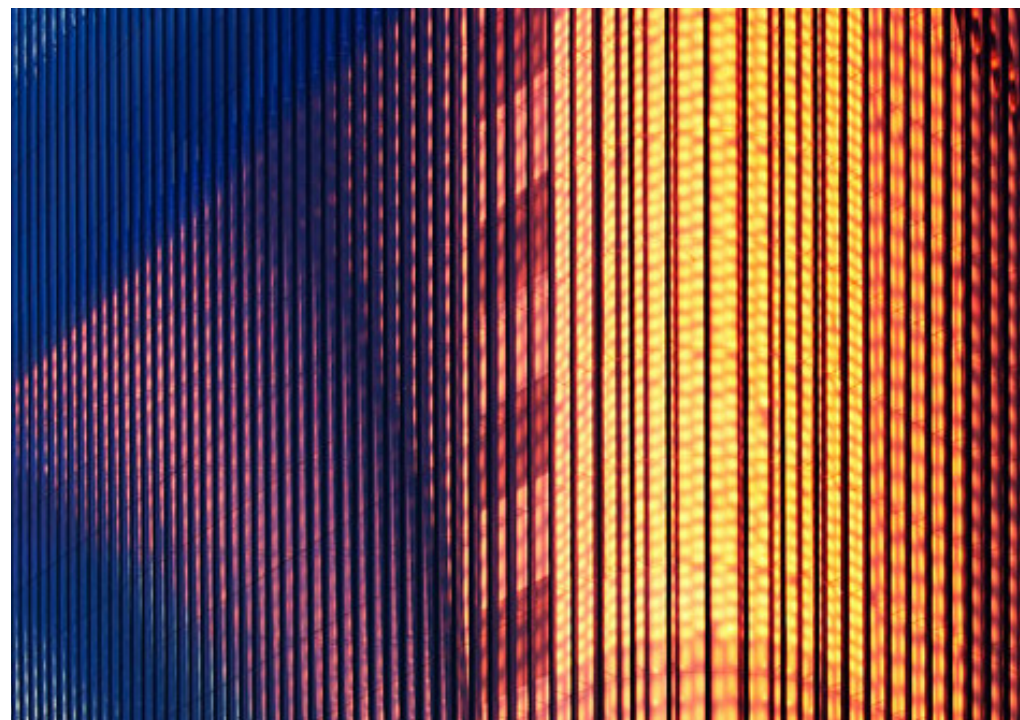
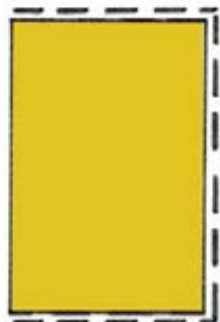
Can we rethink the walls as an armature for organic elements (oysters), landscape (rocks) or activities (sports equipment)?



Green facade



Oyster aggregate concrete

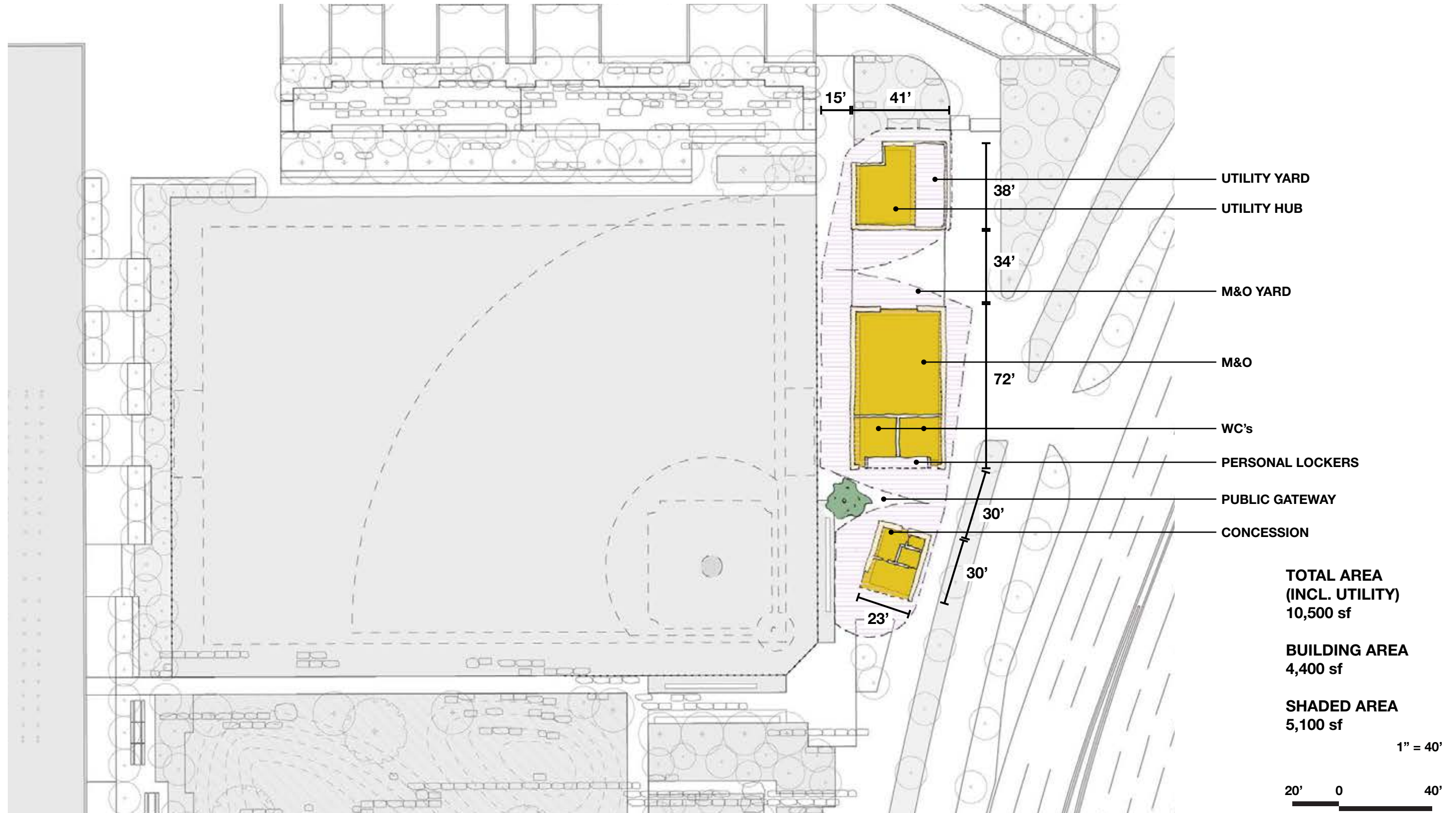


Night time activation through lighting (Galleria Centercity, UNstudio)



Climbing wall (WOS 8, NL Architects)

PORCH SITE PLAN



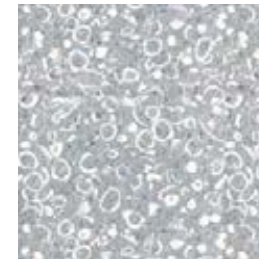
PROPOSAL - PORCH



Canopy cuts for daylight

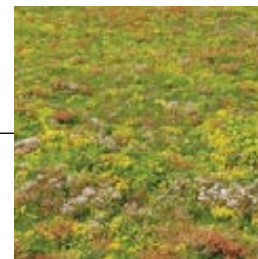


Concrete (UHPC or cast-in-place)

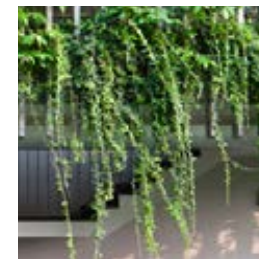


Oyster aggregate concrete

or



Sedum roof

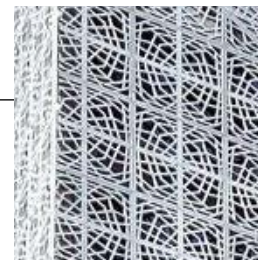


Hanging plants

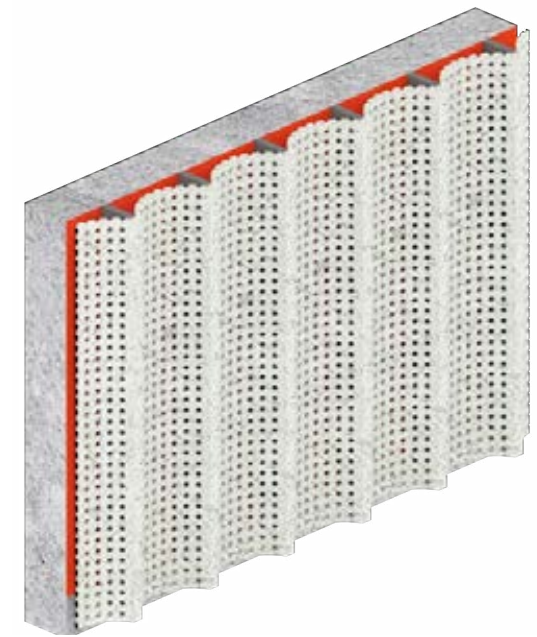
+



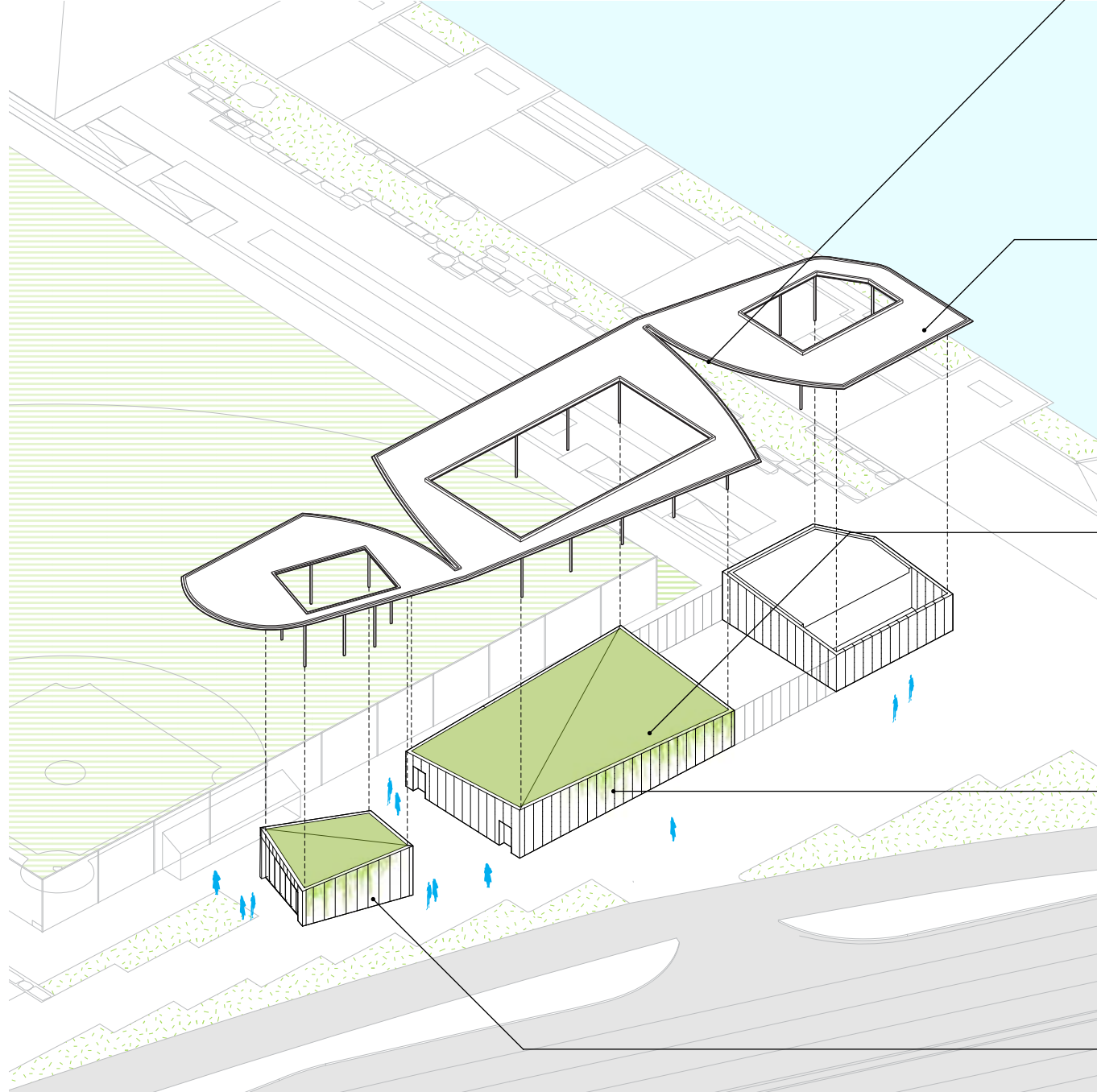
Concrete structural wall with cladding on top



Perforated rainscreen



Perforated rainscreen



PORCH WITH PERFORATED RAINSCREEN



West elevation



East elevation

PORCH WITH PERFORATED RAINSCREEN

Hanging plants



Sedum roof



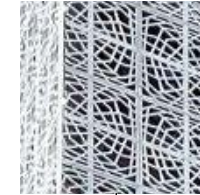
Canopy cut



color on concrete or waterproofing layer



Perforated rainscreen



Concrete (UHPC or cast-in-place)



View of corridor between ball field and pavilion



View of restroom entries



Perforated concrete, terra cotta, or composite panel

PORCH WITH PERFORATED RAINSCREEN



View of public gateway



View of concession from SE corner



lighting behind perforated panels

CONCEPT PLAN





NORTH EDGE AERIAL

